



Eighth  
Edition

# MOLECULAR CELL BIOLOGY

Lodish

Berk

Kaiser

Krieger

Bretscher

Ploegh

Amon

Martin

*this page left intentionally blank*

# Molecular Cell Biology

## ABOUT THE AUTHORS



**HARVEY LODISH** is Professor of Biology and Professor of Biological Engineering at the Massachusetts Institute of Technology and a Founding Member of the Whitehead Institute for Biomedical Research. Dr. Lodish is also a member of the National Academy of Sciences and the American Academy of Arts and Sciences and was President (2004) of the American Society for Cell Biology. He is well known for his work on cell-membrane physiology, particularly the biosynthesis of many cell-surface proteins, and on the cloning and functional analysis of several cell-surface receptor proteins, such as the erythropoietin and TGF- $\beta$  receptors. His laboratory also studies long noncoding RNAs and microRNAs that regulate the development and function of hematopoietic cells and adipocytes. Dr. Lodish teaches undergraduate and graduate courses in cell biology and biotechnology. *Photo credit: John Soares.*



**ARNOLD BERK** holds the UCLA Presidential Chair in Molecular Cell Biology in the Department of Microbiology, Immunology, and Molecular Genetics and is a member of the Molecular Biology Institute at the University of California, Los Angeles. Dr. Berk is also a fellow of the American Academy of Arts and Sciences. He is one of the discoverers of RNA splicing and of mechanisms for gene control in viruses. His laboratory studies the molecular interactions that regulate transcription initiation in mammalian cells, focusing in particular on adenovirus regulatory proteins. He teaches an advanced undergraduate course in cell biology of the nucleus and a graduate course in biochemistry. *Photo credit: Penny Jennings/UCLA Department of Chemistry & Biochemistry.*



**CHRIS A. KAISER** is the Amgen Inc. Professor in the Department of Biology at the Massachusetts Institute of Technology. He is also a former Department Head and former Provost. His laboratory uses genetic and cell biological methods to understand how newly synthesized membrane and secretory proteins are folded and stored in the compartments of the secretory pathway. Dr. Kaiser is recognized as a top undergraduate educator at MIT, where he has taught genetics to undergraduates for many years. *Photo credit: Chris Kaiser.*



**MONTY KRIEGER** is the Whitehead Professor in the Department of Biology at the Massachusetts Institute of Technology and a Senior Associate Member of the Broad Institute of MIT and Harvard. Dr. Krieger is also a member of the National Academy of Sciences. For his innovative teaching of undergraduate biology and human physiology as well as graduate cell biology courses, he has received numerous awards. His laboratory has made contributions to our understanding of membrane trafficking through the Golgi apparatus and has cloned and characterized receptor proteins important for pathogen recognition and the movement of cholesterol into and out of cells, including the HDL receptor. *Photo credit: Monty Krieger.*



**ANTHONY BRETSCHER** is Professor of Cell Biology at Cornell University and a member of the Weill Institute for Cell and Molecular Biology. His laboratory is well known for identifying and characterizing new components of the actin cytoskeleton and elucidating the biological functions of those components in relation to cell polarity and membrane traffic. For this work, his laboratory exploits biochemical, genetic, and cell biological approaches in two model systems, vertebrate epithelial cells and the budding yeast. Dr. Bretscher teaches cell biology to undergraduates at Cornell University. *Photo credit: Anthony Bretscher.*



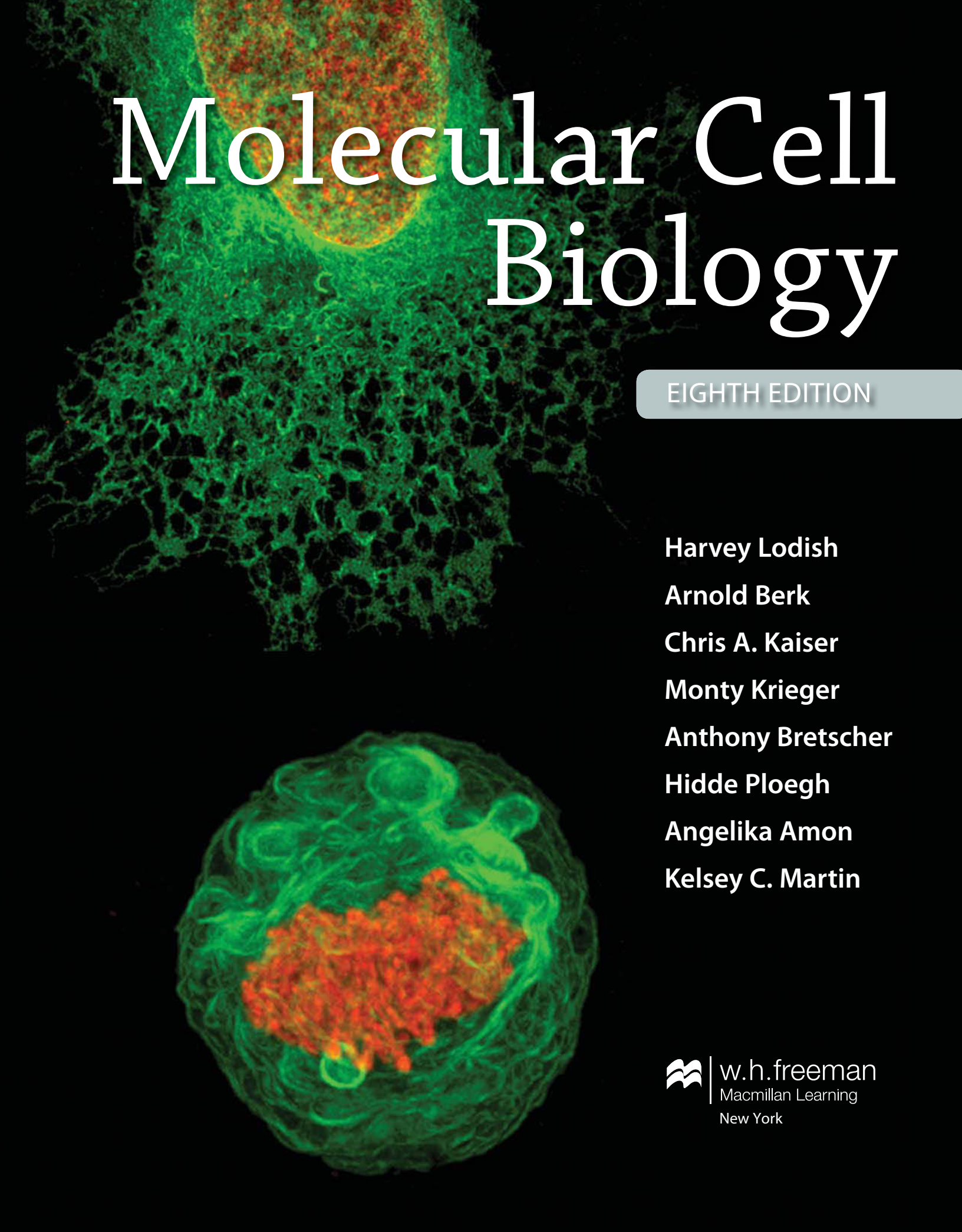
**HIDDE PLOEGH** is Professor of Biology at the Massachusetts Institute of Technology and a member of the Whitehead Institute for Biomedical Research. One of the world's leading researchers in immune-system behavior, Dr. Ploegh studies the various tactics that viruses employ to evade our immune responses and the ways our immune system distinguishes friend from foe. Dr. Ploegh teaches immunology to undergraduate students at Harvard University and MIT. *Photo credit: Hidde Ploegh.*



**ANGELIKA AMON** is Professor of Biology at the Massachusetts Institute of Technology, a member of the Koch Institute for Integrative Cancer Research, and Investigator at the Howard Hughes Medical Institute. She is also a member of the National Academy of Sciences. Her laboratory studies the molecular mechanisms that govern chromosome segregation during mitosis and meiosis and the consequences—aneuploidy—when these mechanisms fail during normal cell proliferation and cancer development. Dr. Amon teaches undergraduate and graduate courses in cell biology and genetics. *Photo credit: Pamela DiFraia/Koch Institute/MIT.*



**KELSEY C. MARTIN** is Professor of Biological Chemistry and Psychiatry and interim Dean of the David Geffen School of Medicine at the University of California, Los Angeles. She is the former Chair of the Biological Chemistry Department. Her laboratory studies the ways in which experience changes connections between neurons in the brain to store long-term memories—a process known as synaptic plasticity. She has made important contributions to elucidating the molecular and cell biological mechanisms that underlie this process. Dr. Martin teaches basic principles of neuroscience to undergraduates, graduate students, dental students, and medical students. *Photo credit: Phuung Pham.*



# Molecular Cell Biology

EIGHTH EDITION

**Harvey Lodish**

**Arnold Berk**

**Chris A. Kaiser**

**Monty Krieger**

**Anthony Bretscher**

**Hidde Ploegh**

**Angelika Amon**

**Kelsey C. Martin**



w.h.freeman  
Macmillan Learning  
New York

PUBLISHER: Katherine Ahr Parker  
ACQUISITIONS EDITOR: Beth Cole  
DEVELOPMENTAL EDITORS: Erica Champion, Heather Moffat  
EDITORIAL ASSISTANTS: Nandini Ahuja, Abigail Fagan  
EXECUTIVE MARKETING MANAGER: Will Moore  
SENIOR PROJECT EDITOR: Elizabeth Geller  
DESIGN MANAGER: Blake Logan  
TEXT DESIGNER: Patrice Sheridan  
COVER DESIGN: Blake Logan  
ILLUSTRATION COORDINATOR: Janice Donnola  
ART DEVELOPMENT EDITOR: H. Adam Steinberg, Art for Science  
PERMISSIONS MANAGER: Jennifer MacMillan  
PHOTO EDITOR: Sheena Goldstein  
PHOTO RESEARCHER: Teri Stratford  
TEXT PERMISSIONS: Felicia Ruocco, Hilary Newman  
MEDIA AND SUPPLEMENTS EDITORS: Amy Thorne, Kathleen Wisneski  
SENIOR MEDIA PRODUCER: Chris Efstratiou  
SENIOR PRODUCTION SUPERVISOR: Paul Rohloff  
COMPOSITION: codeMantra  
PRINTING AND BINDING: RR Donnelley  
COVER IMAGE: Dr. Tomas Kirchhausen and Dr. Lei Lu

**ABOUT THE COVER:** Imaging of the intracellular organelles of a live human HeLa cell shows the dramatic morphological changes that accompany the process of cell division. The membrane of the endoplasmic reticulum (ER) is labeled green by a fluorescently tagged component of the translocon (GFP-Sec61 $\beta$ ) and chromatin is labeled red by a fluorescently tagged histone (H2B-mRFP). **Front:** An interphase cell showing uncondensed chromatin filling the nucleus, with the ER as a reticulum of cisternae surrounding the nucleus and interconnected with lace-like tubules at the cell periphery. **Back:** Prior to cell division the chromatin condenses to reveal the worm-like structure of individual chromosomes, the nuclear envelope breaks down, and the ER condenses into an array of cisternae surrounding the condensed chromosomes. As cell division proceeds the replicated chromosomes will segregate equally into two daughter cells, nuclear envelopes will form in the daughter cells, and the ER will return to its characteristic reticular organization. *Cover photo: Dr. Tomas Kirchhausen & Dr. Lei Lu.*

Library of Congress Control Number: 2015957295

ISBN-13: 978-1-4641-8339-3

ISBN-10: 1-4641-8339-2

© 2016, 2013, 2008, 2004 by W. H. Freeman and Company

All rights reserved.

Printed in the United States of America

First printing

W. H. Freeman and Company

One New York Plaza, Suite 4500, New York, NY 10004-1562

www.macmillanhighered.com

**TO OUR STUDENTS AND TO OUR TEACHERS,**  
from whom we continue to learn,  
**AND TO OUR FAMILIES,**  
for their support, encouragement, and love

*this page left intentionally blank*



**In writing** the eighth edition of *Molecular Cell Biology*, we have incorporated many of the spectacular advances made over the past four years in biomedical science, driven in part by new experimental technologies that have revolutionized many fields. Fast techniques for sequencing DNA, allied with efficient methods to generate and study mutations in model organisms and to map disease-causing mutations in humans, have illuminated a basic understanding of the functions of many cellular components, including hundreds of human genes that affect diseases such as diabetes and cancer.

For example, advances in genomics and bioinformatics have uncovered thousands of novel long noncoding RNAs that regulate gene expression, and have generated insights into and potential therapies for many human diseases. Powerful genome editing technologies have led to an unprecedented understanding of gene regulation and function in many types of living organisms. Advances in mass spectrometry and cryoelectron microscopy have enabled dynamic cell processes to be visualized in spectacular detail, providing deep insight into both the structure and the function of biological molecules, post-translational modifications, multiprotein complexes, and organelles. Studies of specific nerve cells in live organisms have been advanced by optogenetic technologies. Advances in stem-cell technology have come from studies of the role of stem cells in plant development and of regeneration in planaria.

Exploring the most current developments in the field is always a priority in writing a new edition, but it is also important to us to communicate the basics of cell biology clearly by stripping away as much extraneous detail as possible to focus attention on the fundamental concepts of cell biology. To this end, in addition to introducing new discoveries and technologies, we have streamlined and reorganized several chapters to clarify processes and concepts for students.

## New Co-Author, Kelsey C. Martin

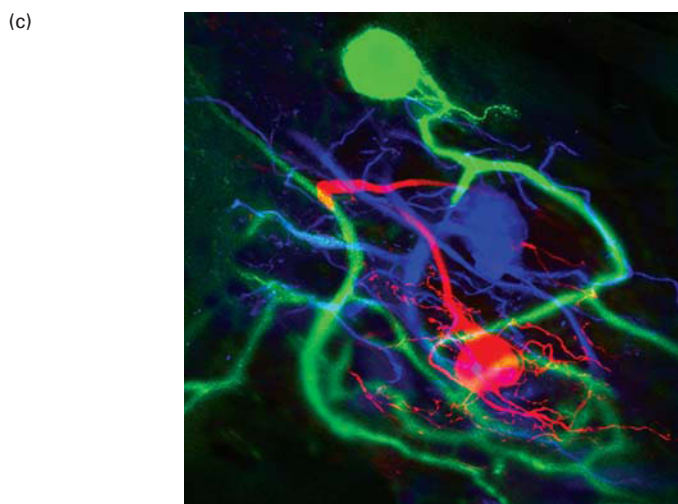
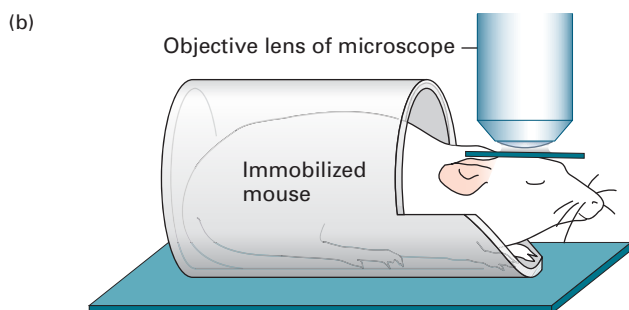
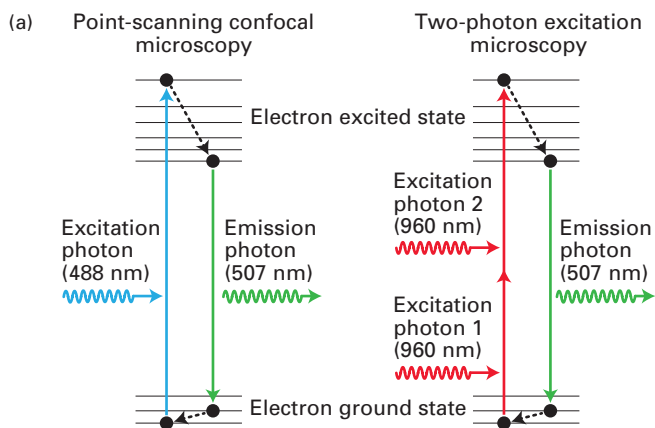
The new edition of *MCB* introduces a new member to our author team, leading neuroscience researcher and educator Kelsey C. Martin of the University of California, Los Angeles. Dr. Martin is Professor of Biological Chemistry and Psychiatry and interim Dean of the David Geffen School of Medicine at UCLA. Her laboratory uses *Aplysia* and mouse models to understand the cell and molecular biology of long-term memory formation. Her group has made important contributions to elucidating the molecular and cell biological mechanisms by which experience changes connections between neurons in the brain to store

long-term memories—a process known as synaptic plasticity. Dr. Martin received her undergraduate degree in English and American Language and Literature at Harvard University. After serving as a Peace Corps volunteer in the Democratic Republic of the Congo, she earned an MD and PhD at Yale University. She teaches basic neurobiology to undergraduate, graduate, dental, and medical students.

## Revised, Cutting-Edge Content

The eighth edition of *Molecular Cell Biology* includes new and improved chapters:

- “Molecules, Cells, and Model Organisms” (Chapter 1) is an improved and expanded introduction to cell biology. It retains the overviews of evolution, molecules, different forms of life, and model organisms used to study cell biology found in previous editions. In this edition, it also includes a survey of eukaryotic organelles, which was previously found in Chapter 9.
- “Culturing and Visualizing Cells” (Chapter 4) has been moved forward (previously Chapter 9) as the techniques used to study cells become ever more important. Light-sheet microscopy, super-resolution microscopy, and two-photon excitation microscopy have been added to bring this chapter up to date.
- All aspects of mitochondrial and chloroplast structure and function have been collected in “Cellular Energetics” (Chapter 12). This chapter now begins with the structure of the mitochondrion, including its endosymbiotic origin and organelle genome (previously in Chapter 6). The chapter now discusses the role of mitochondria-associated membranes (MAMs) and communication between mitochondria and the rest of the cell.
- Cell signaling has been reframed to improve student accessibility. “Signal Transduction and G Protein–Coupled Receptors” (Chapter 15) begins with an overview of the concepts of cell signaling and methods for studying it, followed by examples of G protein–coupled receptors performing multiple roles in different cells. “Signaling Pathways That Control Gene Expression” (Chapter 16) now focuses on gene expression, beginning with a new discussion of Smads. Further examples cover the major signaling pathways that students will encounter in cellular metabolism, protein degradation, and cellular differentiation. Of particular interest is a new section on Wnt and Notch signaling pathways controlling stem-cell differentiation in planaria. The chapter ends by describing how signaling pathways are integrated



**FIGURE 4-21** Two-photon excitation microscopy allows deep penetration for intravital imaging. (a) In conventional point-scanning confocal microscopy, absorption of a single photon results in an electron jumping to the excited state. In two-photon excitation, two lower-energy photons arrive almost instantaneously and induce the electron to jump to the excited state. (b) Two-photon microscopy can be used to observe cells up to 1 mm deep within a living animal immobilized on the microscope stage. (c) Neurons in a lobster were imaged using two-photon excitation microscopy.

[Part (c) unpublished data from Peter Kloppenburg and Warren R. Zipfel.]

to form a cellular response in insulin and glucagon control of glucose metabolism.

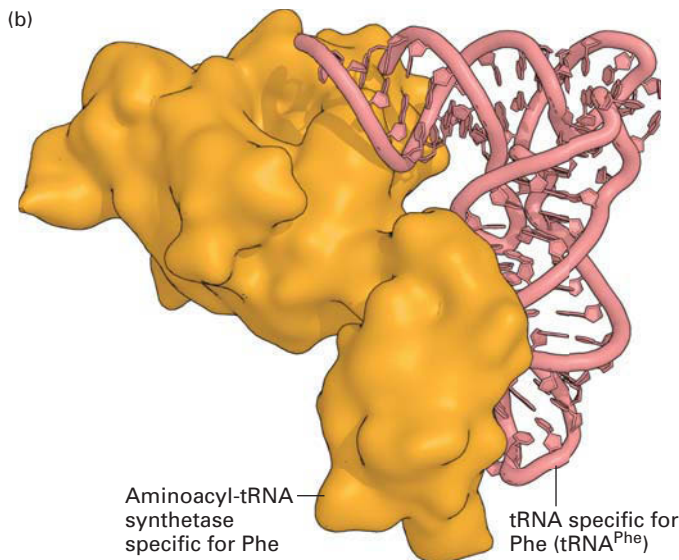
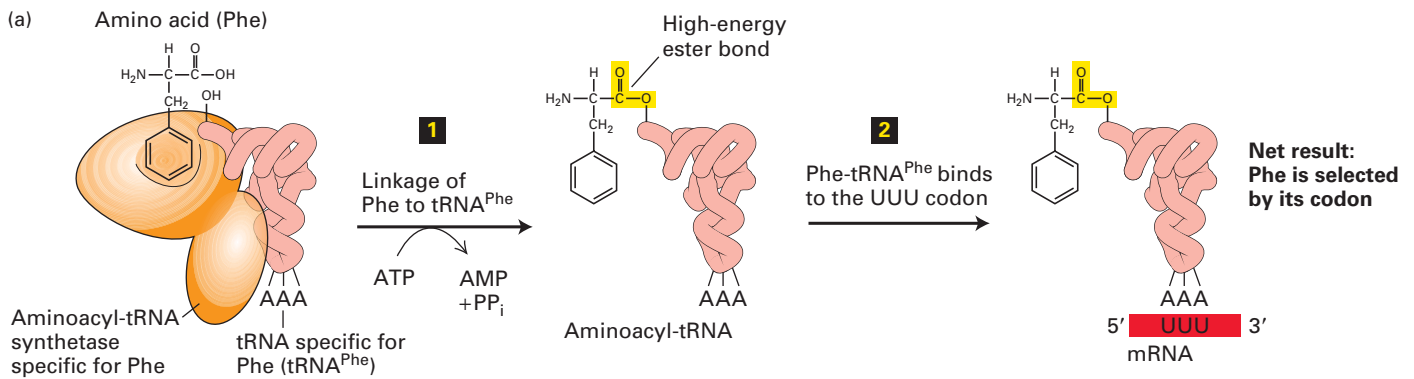
- Our new co-author, Kelsey C. Martin, has extensively revised and updated “Cells of the Nervous System” (Chapter 22) to include several new developments in the field. Optogenetics, a technique that uses channelrhodopsins and light to perturb the membrane potential of a cell, can be used in live animals to link neural pathways with behavior. The formation and pruning of neural pathways in the central nervous system is under active investigation, and a new discussion of signals that govern these processes focuses on the cell-cell contacts involved. This discussion leads to an entirely new section on learning and memory, which explores the signals and molecular mechanisms underlying synaptic plasticity.

### Increased Clarity, Improved Pedagogy

As experienced teachers of both undergraduate and graduate students, we are always striving to improve student understanding. Being able to visualize a molecule in action can have a profound effect on a student’s grasp of the molecular processes within a cell. With this in mind, we have updated many of the molecular models for increased clarity and added models where they can deepen student understanding. From the precise fit required for tRNA charging, to the conservation of ribosome structure, to the dynamic strength of tropomyosin and troponin in muscle contraction, these figures communicate the complex details of molecular structure that cannot be conveyed in schematic diagrams alone. In conjunction with these new models, their schematic icons have been revised to more accurately represent them, allowing students a smooth transition between the molecular details of a structure and its function in the cell.

### New Discoveries, New Methodologies

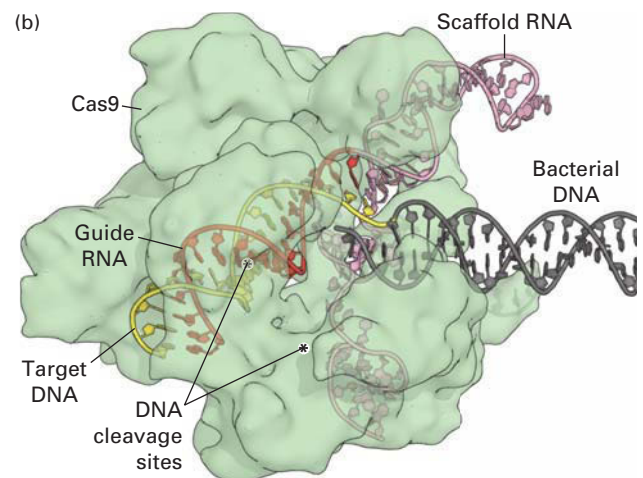
- Model organisms *Chlamydomonas reinhardtii* (for study of flagella, chloroplast formation, photosynthesis, and phototaxis) and *Plasmodium falciparum* (novel organelles and a complex life cycle) (Ch. 1)
- Intrinsically disordered proteins (Ch. 3)
- Chaperone-guided folding and updated chaperone structures (Ch. 3)
- Unfolded proteins and the amyloid state and disease (Ch. 3)
- Hydrogen/deuterium exchange mass spectrometry (HXMS) (Ch. 3)
- Phosphoproteomics (Ch. 3)
- Two-photon excitation microscopy (Ch. 4)
- Light-sheet microscopy (Ch. 4)
- Super-resolution microscopy (Ch. 4)



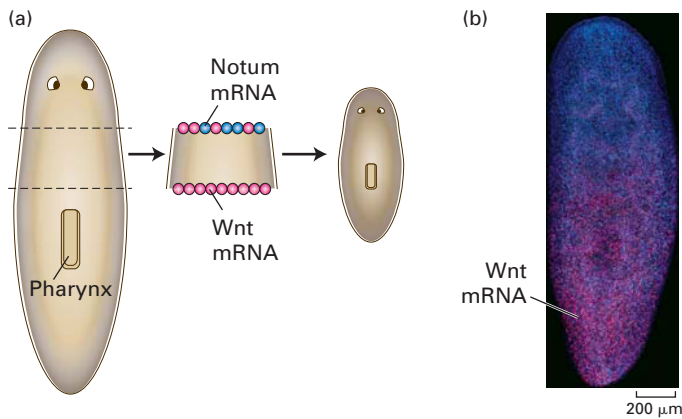
**FIGURE 5-19** (a) Translating nucleic acid sequence into amino acid sequence requires two steps. Step 1: An aminoacyl-tRNA synthetase couples a specific amino acid to its corresponding tRNA. Step 2: The anticodon base-pairs with a codon in the mRNA specifying that amino acid. (b) Molecular model of the human mitochondrial aminoacyl-tRNA synthetase for Phe in complex with tRNA<sup>Phe</sup>.

- Three-dimensional culture matrices and 3D printing (Ch. 4)
- Ribosome structural comparison across domains shows conserved core (Ch. 5)
- CRISPR–Cas9 system in bacteria and its application in genomic editing (Ch. 6)
- Chromosome conformation capture techniques reveal topological domains in chromosome territories within the nucleus (Ch. 8)
- Mapping of DNase I hypersensitive sites reveals cell developmental history (Ch. 9)
- Long noncoding RNAs involved in X inactivation in mammals (Ch. 9)
- ENCODE databases (Ch. 9)
- Improved discussion of mRNA degradation pathways and RNA surveillance in the cytoplasm (Ch. 10)
- Nuclear bodies: P bodies, Cajal bodies, histone locus bodies, speckles, paraspeckles, and PML nuclear bodies (Ch. 10)

- GLUT1 molecular model and transport cycle (Ch. 11)
- Expanded discussion of the pathway for import of PTS1-bearing proteins into the peroxisomal matrix (Ch. 13)
- Expanded discussion of Rab proteins and their role in vesicle fusion with target membranes (Ch. 14)
- Human G protein–coupled receptors of pharmaceutical importance (Ch. 15)
- The role of Smads in chromatin modification (Ch. 16)



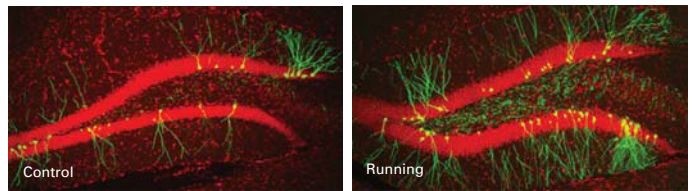
**FIGURE 6-43b** Cas9 uses a guide RNA to identify and cleave a specific DNA sequence.



**FIGURE 16-31** Gradients of Wnt and Notum guide regeneration of a head and tail by planaria. [Part (b) Jessica Witchley and Peter Reddien.]

- Wnt concentration gradients in planarian development and regeneration (Ch. 16)
- Inflammatory hormones in adipose cell function and obesity (Ch. 16)
- Regulation of insulin and glucagon function in control of blood glucose (Ch. 16)
- Use of troponins as an indicator of the severity of a heart attack (Ch. 17)
- Neurofilaments and keratins involved in skin integrity, epidermolysis bullosa simplex (Ch. 18)
- New structures and understanding of function of dynein and dynactin (Ch. 18)
- Expanded discussion of lamins and their role in nuclear membrane structure and dynamics during mitosis (Ch. 18)
- Diseases associated with cohesin defects (Ch. 19)
- The Hippo pathway (Ch. 19)
- Spindle checkpoint assembly and nondisjunction and aneuploidy in mice; nondisjunction increases with maternal age (Ch. 19)
- Expanded discussion of the functions of the extracellular matrix and the role of cells in assembling it (Ch. 20)
- Mechanotransduction (Ch. 20)
- Structure of cadherins and their cis and trans interactions (Ch. 20)
- Cadherins as receptors for class C rhinoviruses and asthma (Ch. 20)
- Improved discussion of microfibrils in elastic tissue and in LTBP-mediated TGF- $\beta$  signaling (Ch. 20)
- Tunneling nanotubes (Ch. 20)
- Functions of WAKs in plants as pectin receptors (Ch. 20)


- Pluripotency of mouse ES cells and the potential of differentiated cells derived from iPS and ES cells in treating various diseases (Ch. 21)
- Pluripotent ES cells in planaria (Ch. 21)
- Cells in intestinal crypts that dedifferentiate to replenish intestinal stem cells (Ch. 21)
- Cdc42 and feedback loops that control cell polarity (Ch. 21)
- Prokaryotic voltage-gated Na<sup>+</sup> channel structure, allowing comparison with voltage-gated K<sup>+</sup> channels (Ch. 22)
- Optogenetics techniques for linking neural circuits with behavior (Ch. 22)
- Mechanisms of synaptic plasticity that govern learning and memory (Ch. 22)



**Figure 22-8** Neurogenesis in the adult brain. Newly born neurons were labeled with GFP in the dentate gyrus of control mice and mice that were allowed to exercise on a running wheel. [Chunmei Zhao and Fred H. Gage.]

- Inflammasomes and non-TLR nucleic acid sensors (Ch. 23)
- Expanded discussion of somatic hypermutation (Ch. 23)
- Improved discussion of the MHC molecule classes; MHC-peptide complexes and their interactions with T-cells (Ch. 23)
- Lineage commitment of T cells (Ch. 23)
- Tumor immunology (Ch. 23)
- The characteristics of cancer cells and how they differ from normal cells (Ch. 24)
- How carcinogens lead to mutations and how mutations accumulate to cancer (Ch. 24)

## Medical Connections

 Many advances in basic cellular and molecular biology have led to new treatments for cancer and other human diseases. Examples of such medical advances are woven throughout the chapters to give students an appreciation for the clinical applications of the basic science they are learning. Many of these applications hinge on a detailed understanding of multiprotein complexes in cells—complexes that catalyze cell movements; regulate DNA transcription,

replication, and repair; coordinate metabolism; and connect cells to other cells and to proteins and carbohydrates in their extracellular environment.

- Stereoisomers of small molecules as drugs—sterically pure molecules have different effects from mixtures (Ch. 2)
- Cholesterol is hydrophobic and must be transported by lipoprotein carriers LDL and HDL (Ch. 2)
- Essential amino acids must be provided in livestock feed (Ch. 2)
- Saturated, unsaturated, and trans fats: their molecular structures and nutritional consequences (Ch. 2)
- Protein misfolding and amyloids in neurodegenerative diseases such as Alzheimer's and Parkinson's (Ch. 3)
- Small molecules that inhibit enzyme activity can be used as drugs (aspirin) or in chemical warfare (sarin gas) (Ch. 3)
- Small-molecule inhibitors of the proteasome are used to treat certain cancers (Ch. 3)
- Disruptions of GTPases, GAPs, GEFs, and GDIs by mutations and pathogens cause a wide variety of diseases (Ch. 3)
- 3-D printing technology may be used to grow replacement organs (Ch. 4)
- The high-resolution structures of ribosomes can help identify small-molecule inhibitors of bacterial, but not eukaryotic, ribosomes (Ch. 5)
- Mutations in mismatch repair proteins lead to hereditary nonpolyposis colorectal cancer (Ch. 5)
- Nucleotide excision-repair proteins were identified in patients with xeroderma pigmentosum (Ch. 5)
- Human viruses HTLV, HIV-1, and HPV initiate infection by binding to specific cell-surface molecules, and some integrate their genomes into the host cell's DNA (Ch. 5)
- The sickle-cell allele is an example of one that exhibits both dominant and recessive properties depending on the phenotype being examined (Ch. 6)
- DNA microarrays can be useful as medical diagnostic tools (Ch. 6)
- Recombinant DNA techniques are used to mass-produce therapeutically useful proteins such as insulin and G-CSF (Ch. 6)
- Most cases of genetic diseases are caused by inherited rather than de novo mutations (Ch. 6)
- A *CFTR* knockout mouse line is useful in studying cystic fibrosis (Ch. 6)
- ABO blood types are determined by the carbohydrates attached to glycoproteins on the surfaces of erythrocytes (Ch. 7)
- Atherosclerosis, marked by accumulation of cholesterol, other lipids, and other biological substances in an artery, is responsible for the majority of deaths due to cardiovascular disease in the United States (Ch. 7)
- Microsatellite repeats have a tendency to expand and can cause neuromuscular diseases such as Huntington disease and myotonic dystrophy (Ch. 8)
- L1 transposable elements can cause genetic diseases by inserting into new sites in the genome (Ch. 8)
- Exon shuffling can result in bacterial resistance to antibiotics, a growing challenge in hospitals (Ch. 8)
- The *NF1* gene, which is mutated in patients with neurofibromatosis, is an example of how bioinformatics techniques can be used to identify the molecular basis of a genetic disease (Ch. 8)
- Telomerase is abnormally activated in most cancers (Ch. 8)
- TFIIH subunits were first identified based on mutations in those subunits that cause defects in DNA repair associated with a stalled RNA polymerase (Ch. 9)
- HIV encodes the Tat protein, which inhibits termination of transcription by RNA polymerase II (Ch. 9)
- Synthetic oligonucleotides are being used in treatment of Duchenne muscular dystrophy (DMD)(Ch. 10)
- Mutations in splicing enhancers can cause exon skipping, as in spinal muscular atrophy (Ch. 10)
- Expansion of microsatellite repeats in genes expressed in neurons can alter their relative abundance in different regions of the central nervous system, resulting in neurological disorders (Ch. 10)
- Thalassemia commonly results from mutations in globin-gene splice sites that decrease splicing efficiency but do not prevent association of the pre-mRNA with snRNPs (Ch. 10)
- Genes encoding components of the mTORC1 pathway are mutated in many cancers, and mTOR inhibitors combined with other therapies may suppress tumor growth (Ch. 10)
- Aquaporin 2 levels control the rate of water resorption from urine being formed by the kidney (Ch. 11)
- Certain cystic fibrosis patients are being treated with a small molecule that allows a mutant protein to traffic normally to the cell surface (Ch. 11)
- SGLT2 inhibitors are in development or have been approved for treatment of type II diabetes (Ch. 11)
- Antidepressants and other therapeutic drugs, as well as drugs of abuse, target Na<sup>+</sup>-powered symporters because of their role in the reuptake and recycling of neurotransmitters (Ch. 11)

- Drugs that inhibit the Na<sup>+</sup>/K<sup>+</sup> ATPase in cardiac muscle cells are used in treating congestive heart failure (Ch. 11)
- Oral rehydration therapy is a simple, effective means of treating cholera and other diseases caused by intestinal pathogens (Ch. 11)
- Mutations in CIC-7, a chloride ion channel, result in defective bone resorption characteristic of the hereditary bone disease osteopetrosis (Ch. 11)
- The sensitivity of mitochondrial ribosomes to the aminoglycoside class of antibiotics, including chloramphenicol, can cause toxicity in patients (Ch. 12)
- Mutations and large deletions in mtDNA cause certain diseases, such as Leber's hereditary optic neuropathy and Kearns-Sayre syndrome (Ch. 12)
- Cyanide is toxic because it blocks ATP production in mitochondria (Ch. 12)
- Reduction in amounts of cardiolipin, as well as an abnormal cardiolipin structure, results in the heart and skeletal muscle defects and other abnormalities that characterize Barth's syndrome (Ch. 12)
- Reactive oxygen species are by-products of electron transport that can damage cells (Ch. 12)
- ATP/ADP antiporter activity was first studied over 2000 years ago through the examination of the effects of poisonous herbs (Ch. 12)
- There are two related subtypes of thermogenic fat cells (Ch. 12)
- A hereditary form of emphysema results from misfolding of proteins in the endoplasmic reticulum (Ch. 13)
- Autosomal recessive mutations that cause defective peroxisome assembly can lead to several developmental defects often associated with craniofacial abnormalities, such as those associated with Zellweger syndrome (Ch. 13)
- Certain cases of cystic fibrosis are caused by mutations in the CFTR protein that prevent movement of this chloride channel from the ER to the cell surface (Ch. 14)
- Study of lysosomal storage diseases has revealed key elements of the lysosomal sorting pathway (Ch. 14)
- The hereditary disease familial hypercholesterolemia results from a variety of mutations in the *LDLR* gene (Ch. 14)
- Therapeutic drugs using the TNF $\alpha$ -binding domain of TNF $\alpha$  receptor are used to treat arthritis and other inflammatory conditions (Ch. 15)
- Monoclonal antibodies that bind HER2 and thereby block signaling by EGF are useful in treating breast tumors that overexpress HER2 (Ch. 15)
- The agonist isoproterenol binds more strongly to epinephrine-responsive receptors on bronchial smooth muscle cells than does epinephrine, and is used to treat bronchial asthma, chronic bronchitis, and emphysema (Ch. 15)
- Some bacterial toxins (e.g., *Bordetella pertussis*, *Vibrio cholerae*, certain strains of *E. coli*) catalyze a modification of a G protein in intestinal cells, increasing intracellular cAMP, which leads to loss of electrolytes and fluids (Ch. 15)
- Nitroglycerin decomposes to NO, a natural signaling molecule that, when used to treat angina, increases blood flow to the heart (Ch. 15)
- PDE inhibitors elevate cGMP in vascular smooth muscle cells and have been developed to treat erectile dysfunction (Ch. 15)
- Many tumors contain inactivating mutations in either TGF- $\beta$  receptors or Smad proteins and are resistant to growth inhibition by TGF- $\beta$  (Ch. 16)
- Epo and G-CSF are used to boost red blood cells and neutrophils, respectively, in patients with kidney disease and during certain cancer therapies that affect blood cell formation in the bone marrow (Ch. 16)
- Many cases of SCID result from a deficiency in the IL-2 receptor gamma chain and can be treated by gene therapy (Ch. 16)
- Mutant Ras proteins that bind but cannot hydrolyze GTP, and are therefore locked in an active GTP-bound state, contribute to oncogenic transformation (Ch. 16)
- Potent and selective inhibitors of Raf are being clinically tested in patients with melanomas caused by mutant Raf proteins (Ch. 16)
- The deletion of the *PTEN* gene in multiple types of advanced cancers results in the loss of the PTEN protein, contributing to the uncontrolled growth of cells (Ch. 16)
- High levels of free  $\beta$ -catenin, caused by aberrant hyperactive Wnt signaling, are associated with the activation of growth-promoting genes in many cancers (Ch. 16)
- Inappropriate activation of Hh signaling associated with primary cilia is the cause of several types of tumors (Ch. 16)
- Increased activity of ADAMs can promote cancer development and heart disease (Ch. 16)
- The brains of patients with Alzheimer's disease accumulate amyloid plaques containing aggregates of the A $\beta$ <sub>42</sub> peptide (Ch. 16)
- Diabetes mellitus is characterized by impaired regulation of blood glucose, which can lead to major complications if left untreated (Ch. 16)
- Hereditary spherocytic anemias can be caused by mutations in spectrin, band 4.1, and ankyrin (Ch. 17)
- Duchenne muscular dystrophy affects the protein dystrophin, resulting in progressive weakening of skeletal muscle (Ch. 17)

- Hypertrophic cardiomyopathies result from various mutations in proteins of the heart contractile machinery (Ch. 17)
- Blood tests that measure the level of cardiac-specific troponins are used to determine the severity of a heart attack (Ch. 17)
- Some drugs (e.g., colchicine) bind tubulin dimers and restrain them from polymerizing into microtubules, whereas others (e.g., taxol) bind microtubules and prevent depolymerization (Ch. 18)
- Defects in LIS1 cause Miller-Dieker lissencephaly in early brain development, leading to abnormalities (Ch. 18)
- Some diseases, such as ADPKD and Bardet-Biedl syndrome, have been traced to defects in primary cilia and intraflagellar transport (Ch. 18)
- Keratin filaments are important to maintaining the structural integrity of epithelial tissues by mechanically reinforcing the connections between cells (Ch. 18)
- Mutations in the human gene for lamin A cause a wide variety of diseases termed laminopathies (Ch. 18)
- In cohesinopathies, mutations in cohesion subunits or cohesion loading factors disrupt expression of genes critical for development, resulting in limb and craniofacial abnormalities and intellectual disabilities (Ch. 19)
- Aneuploidy leads to misregulation of genes and can contribute to cancer development (Ch. 19)
- Aneuploid eggs are largely caused by chromosome mis-segregation in meiosis I or nondisjunction, leading to miscarriage or Down syndrome (Ch. 19)
- The protein CDHR3 enables class C rhinoviruses (RV-C) to bind to airway epithelial cells, enter them, and replicate, causing respiratory diseases and exacerbating asthma (Ch. 20)
- The cadherin desmoglein is the predominant target of autoantibodies in the skin disease pemphigus vulgaris (Ch. 20)
- Some pathogens, such as hepatitis C virus and the enteric bacterium *Vibrio cholerae*, have evolved to exploit the molecules in tight junctions (Ch. 20)
- Mutations in connexin genes cause a variety of diseases (Ch. 20)
- Defects in the glomerular basement membrane can lead to renal failure (Ch. 20)
- In cells deprived of ascorbate, the pro- $\alpha$  collagen chains are not hydroxylated sufficiently to form the structural support of collagen necessary for healthy blood vessels, tendons, and skin, resulting in scurvy (Ch. 20)
- Mutations affecting type I collagen and its associated proteins cause a variety of diseases, including osteogenesis imperfecta (Ch. 20)
- A variety of diseases, often involving skeletal and cardiovascular abnormalities (e.g., Marfan syndrome), result from mutations in the genes encoding the structural proteins of elastic fibers or the proteins that contribute to their proper assembly (Ch. 20)
- Connections between the extracellular matrix and cytoskeleton are defective in muscular dystrophy (Ch. 20)
- Leukocyte-adhesion deficiency is caused by a genetic defect that results in the leukocytes' inability to fight infection, thereby increasing susceptibility to repeated bacterial infections (Ch. 20)
- The stem cells in transplanted bone marrow can generate all types of functional blood cells, which makes such transplants useful for patients with certain hereditary blood diseases as well as cancer patients who have received irradiation or chemotherapy (Ch. 21)
- Channelopathies, including some forms of epilepsy, are caused by mutations in genes that encode ion channels (Ch. 22)
- The topical anesthetic lidocaine works by binding to amino acid residues along the voltage-gated Na<sup>+</sup> channel, locking it in the open but occluded state (Ch. 22)
- The cause of multiple sclerosis is not known, but seems to involve either the body's production of auto-antibodies that react with myelin basic protein or the secretion of proteases that destroy myelin proteins (Ch. 22)
- Peripheral myelin is a target of autoimmune disease, mainly involving the formation of antibodies against P<sub>0</sub> (Ch. 22)
- The key role of VAMP in neurotransmitter exocytosis can be seen in the mechanism of action of botulinum toxin (Ch. 22)
- Neurotransmitter transporters are targets of a variety of drugs of abuse (e.g., cocaine) as well as therapeutic drugs commonly used in psychiatry (e.g., Prozac, Zoloft, Paxil) (Ch. 22)
- Nicotinic acetylcholine receptors produced in brain neurons are important in learning and memory; loss of these receptors is observed in schizophrenia, epilepsy, drug addiction, and Alzheimer's disease (Ch. 22)
- Studies suggest that the voltage-gated Na<sup>+</sup> channel Nav1.7 is a key component in the perception of pain (Ch. 22)
- People vary significantly in sense of smell (Ch. 22)
- Synaptic translation of localized mRNAs is critical to the formation and the experience-dependent plasticity of neural circuits, and alterations in this process result in neurodevelopmental and cognitive disorders (Ch. 22)
- The immunosuppressant drug cyclosporine inhibits calcineurin activity through the formation of a

cyclosporine-cyclophilin complex, thus enabling successful allogenic tissue transplantation (Ch. 23)

- Vaccines elicit protective immunity against a variety of pathogens (Ch. 23)
- Increased understanding of the molecular cell biology of tumors is revolutionizing the way cancers are diagnosed and treated (Ch. 24)

## Plant Biology Connections



Developments in agriculture, environmental science, and alternative energy production have demonstrated that the molecular cell biology of plants is increasingly relevant to our lives. Understanding photosynthesis and chloroplasts is just the beginning of plant biology. Throughout the text, we have highlighted plant-specific topics, including aspects of cell structure and function that are unique to plants, plant development, and plant biotechnology applications directed toward solving problems in agriculture and medicine. ■

- Vascular plants have rigid cell walls and use turgor pressure to stand upright and grow (Ch. 11)
- Transgenic plants have been produced that overexpress the vacuolar  $\text{Na}^+/\text{H}^+$  antiporter, and can therefore grow successfully in soils containing high salt concentrations (Ch. 11)

- Editing of plant mitochondrial RNA transcripts can convert cytosine residues to uracil residues (Ch. 12)
- Photosynthesis is an important process for synthesizing ATP (Ch. 12)
- Chloroplast DNAs are evolutionarily younger and show less structural diversity than mitochondrial DNAs (Ch. 12)
- Chloroplast transformation has led to engineered plants that are resistant to infections as well as plants that can be used to make protein drugs (Ch. 12)
- In giant green algae such as *Nitella*, the cytosol flows rapidly due to use of myosin V (Ch. 17)
- Formation of the spindle and cytokinesis have unique features in plants (Ch. 18)
- Meristems are niches for stem cells in plants (Ch. 21)
- A negative feedback loop maintains the size of the shoot apical stem-cell population (Ch. 21)
- The root meristem resembles the shoot meristem in structure and function (Ch. 21)





**LaunchPad**  
macmillan learning

LaunchPad for *Molecular Cell Biology* is a robust teaching and learning tool with all instructor and student resources as well as a fully interactive e-Book.

## Student Resources

Interactive **Case Studies** guide students through applied problems related to important concepts; topics include cancer, diabetes, and cystic fibrosis.

"We isolated proteins from the cells, ran protein samples out on 8 percent polyacrylamide gels, and transferred the proteins to nitrocellulose membranes for blotting with HER-specific antibodies. Based on the RT-PCR data, which antibody or antibodies do you think we tested?"

A.  $\alpha$ -HER1 antibody  Yes  No

B.  $\alpha$ -HER2 antibody  Yes  No

C.  $\alpha$ -HER3 antibody  Yes  No

D.  $\alpha$ -HER4 antibody  Yes  No

Feedback  
Correct.

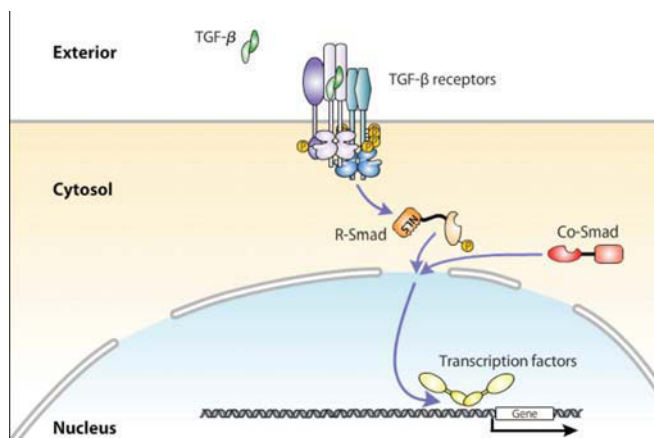
"Since the RT-PCR data showed expression of HER2 and HER3, we performed two Western blots, one using the  $\alpha$ -HER2 antibody and the other using the  $\alpha$ -HER3 antibody. The expected molecular weight of HER2 is approximately 138 kDa, and the expected molecular weight of HER3 is about 135 kDa."

$\alpha$ -HER2 antibody				$\alpha$ -HER3 antibody			
MW	Normal	PC	PCK	MW	Normal	PC	PCK
140 kDa	-	-	-	140 kDa	-	-	-
130 kDa	-	-	-	130 kDa	-	-	-

MW = molecular weight standard  
Normal = normal pancreatic cells  
PC = pancreatic cells not expressing protein X  
PCK = pancreatic cells expressing protein X

**Case Study** "To Kill a Cancer Cell" leads students through the experiments needed to identify a perturbed signaling pathway.

Over 60 **Animations** based on key figures from the text illustrate difficult or important structures and processes.



**Animation** of Figure 16-3b depicts signal transduction in the TGF- $\beta$ /Smad pathway.

**Concept Check** quizzes test student understanding of the most important concepts of each section.



**LearningCurve**, a self-paced adaptive quizzing tool for students, tailors questions to their target difficulty level and encourages them to incorporate content from the text into their study routine.

A collection of **Videos** shows students real cell processes as they appear in the lab.

**Analyze the Data** questions ask students to apply critical thinking and data analysis skills to solving complex problems.

**Classic Experiments** introduce students to the details of a historical experiment important to the cell and molecular biology fields.

## Instructor Resources

All **Figures and Photos** from the text are optimized for classroom presentation and provided in several formats and with and without labels.

A comprehensive **Test Bank** provides a variety of questions for creating quizzes and exams.

**Lecture Slides** built around high-quality versions of text figures provide a starting point for in-class presentations.

**Clicker Questions** in slide format help instructors promote active learning in the classroom.

A **PDF Solutions Manual** provides answers to the Review the Concepts questions at the end of each chapter. An answer key for Analyze the Data questions is also included.

## ACKNOWLEDGMENTS

In updating, revising, and rewriting this book, we were given invaluable help by many colleagues. We thank the following people who generously gave of their time and expertise by making contributions to specific chapters in their areas of interest, providing us with detailed information about their courses, or by reading and commenting on one or more chapters:

David Agard, *University of California, San Francisco, and Howard Hughes Medical Institute*  
Ann Aguanno, *Marymount Manhattan College*  
Stephen Amato, *Northeastern University*  
Shivanthi Anandan, *Drexel University*  
Kenneth Balazovich, *University of Michigan*  
Amit Banerjee, *Wayne State University*  
Lisa Banner, *California State University, Northridge*  
Benjamin Barad, *University of California, San Francisco*  
Kenneth Belanger, *Colgate University*  
Andrew Bendall, *University of Guelph*  
Eric Betzig, *Howard Hughes Medical Institute*  
Subhrajit Bhattacharya, *Auburn University*  
Ashok Bidwai, *West Virginia University*  
David Bilder, *University of California, Berkeley*  
Elizabeth Blinstrup-Good, *University of Illinois*  
Jenna Bloemer, *Auburn University*  
Jonathan Bogan, *Yale University School of Medicine*  
Indrani Bose, *Western Carolina University*  
Laurie Boyer, *Massachusetts Institute of Technology*  
James Bradley, *Auburn University*  
Eric Brenner, *New York University*  
Mirjana Brockett, *Georgia Institute of Technology*  
Manal Buabeid, *Auburn University*  
Heike Bucking, *South Dakota State University*  
Tim Burnett, *Emporia State University*  
Samantha Butler, *University of California, Los Angeles*  
W. Malcolm Byrnes, *Howard University College of Medicine*  
Monique Cadrin, *University of Quebec Trois-Rivières*  
Martin Cann, *Durham University*  
Steven A. Carr, *Broad Institute of Massachusetts Institute of Technology and Harvard*  
Suzie Chen, *Rutgers University*  
Cindy Cooper, *Truman State University*  
David Daleke, *Indiana University*  
Thomas J. Deerinck, *University of California, San Diego*  
Linda DeVeaux, *South Dakota School of Mines and Technology*

David Donze, *Louisiana State University*  
William Dowhan, *University of Texas, Houston*  
Janet Duerr, *Ohio University*  
Manoj Duraisingh, *Harvard School of Public Health*  
Paul Durham, *Missouri State University*  
David Eisenberg, *University of California, Los Angeles*  
Sevinc Ercan, *New York University*  
Marilyn Farquhar, *University of California, San Diego*  
Jeffrey Fillingham, *Ryerson University*  
Kathleen Fitzpatrick, *Simon Fraser University*  
Friedrich Foerster, *Max Planck Institute of Biochemistry*  
Margaret T. Fuller, *Stanford University School of Medicine*  
Warren Gallin, *University of Alberta*  
Liang Gao, *Stony Brook University*  
Chris Garcia, *Stanford University School of Medicine*  
Mary Gehring, *Massachusetts Institute of Technology*  
Jayant Ghiara, *University of California, San Diego*  
David Gilmour, *Pennsylvania State University*  
Alfred Goldberg, *Harvard Medical School*  
Sara Gremillion, *Armstrong State University*  
Lawrence I. Grossman, *Wayne State University*  
Barry M. Gumbiner, *University of Washington and Seattle Children's Research Institute*  
Yanlin Guo, *University of Southern Mississippi*  
Gyorgy Hajnoczky, *Thomas Jefferson University*  
Nicholas Harden, *Simon Fraser University*  
Maureen Harrington, *Indiana University*  
Michael Harrington, *University of Alberta*  
Marcia Harrison-Pitaniello, *Marshall University*  
Craig Hart, *Louisiana State University*  
Andreas Herrlich, *Harvard Medical School*  
Ricky Hirschhorn, *Hood College*  
Barry Honda, *Simon Fraser University*  
H. Robert Horvitz, *Massachusetts Institute of Technology*  
Nai-Jia Huang, *Whitehead Institute*  
Richard O. Hynes, *Massachusetts Institute of Technology and Howard Hughes Medical Institute*  
Rudolf Jaenisch, *Massachusetts Institute of Technology*  
Cheryl Jorcyk, *Boise State University*  
Naohiro Kato, *Louisiana State University*  
Amy E. Keating, *Massachusetts Institute of Technology*  
Younghoon Kee, *University of South Florida*  
Eirini Kefalogianni, *Harvard Medical School*  
Thomas Keller, *Florida State University*

Greg Kelly, *University of Western Ontario*  
 Baljit Khakh, *University of California, Los Angeles*  
 Lou Kim, *Florida International University*  
 Thomas Kirchhausen, *Harvard Medical School*  
 Elaine Kirschke, *University of California, San Francisco*  
 Cindy Klevickis, *James Madison University*  
 Donna Koslowsky, *Michigan State University*  
 Diego Krapf, *Colorado State University*  
 Arnold Kriegsten, *University of California, San Francisco*  
 Michael LaGier, *Grand View University*  
 Brett Larson, *Armstrong Atlantic State University*  
 Mark Lazzaro, *College of Charleston*  
 Daniel Leahy, *Johns Hopkins University School of Medicine*  
 Wesley Legant, *Howard Hughes Medical Institute*  
 Fang Ju Lin, *Coastal Carolina University*  
 Susan Lindquist, *Massachusetts Institute of Technology*  
 Adam Linstedt, *Carnegie Mellon University*  
 Jennifer Lippincott-Schwartz, *National Institutes of Health*  
 James Lissemore, *John Carroll University*  
 Richard Londrville, *University of Akron*  
 Elizabeth Lord, *University of California, Riverside*  
 Charles Mallery, *University of Miami*  
 George M. Martin, *University of Washington*  
 Michael Martin, *John Carroll University*  
 C. William McCurdy, *University of California, Davis, and  
 Lawrence Berkeley National Laboratory*  
 James McNew, *Rice University*  
 Ivona Mladenovic, *Simon Fraser University*  
 Vamsi K. Mootha, *Harvard Medical School and Massachusetts  
 General Hospital*  
 Tsafir Mor, *Arizona State University*  
 Roderick Morgan, *Grand Valley State University*  
 Sean Morrison, *University of Texas Southwestern Medical School*  
 Aris Moustakas, *Ludwig Institute, Uppsala University, Sweden*  
 Dana Newton, *College of The Albemarle*  
 Bennett Novitch, *University of California, Los Angeles*  
 Roel Nusse, *Stanford University School of Medicine*  
 Jennifer Panizzi, *Auburn University*  
 Samantha Parks, *Georgia State University*  
 Ardem Patapoutian, *The Scripps Research Institute*  
 Rekha Patel, *University of South Carolina*  
 Aaron Pierce, *Nicholls State University*  
 Joel Piperberg, *Millersville University of Pennsylvania*  
 Todd Primm, *Sam Houston State University*  
 April Pyle, *University of California, Los Angeles*  
 Nicholas Quintyne, *State University of New York at Fredonia*  
 Peter Reddien, *Massachusetts Institute of Technology*  
 Mark Reedy, *Creighton University*  
 Dan Reines, *Emory University*  
 Jatin Roper, *Tufts University School of Medicine*  
 Evan Rosen, *Harvard Medical School*  
 Richard Roy, *McGill University*  
 Edmund Rucker, *University of Kentucky*  
 Helen Saibil, *University of London*  
 Alapakkam Sampath, *University of California, Los Angeles*  
 Peter Santi, *University of Minnesota*  
 Burkhard Schulz, *Purdue University*  
 Thomas Schwartz, *Massachusetts Institute of Technology*  
 Stylianos Scordilis, *Smith College*  
 Kavita Shah, *Purdue University*  
 Lin Shao, *Howard Hughes Medical Institute*  
 Allan Showalter, *Ohio University*  
 Jeff Singer, *Portland State University*  
 Agnes Southgate, *College of Charleston*  
 Daniel Starr, *University of California, Davis*  
 Jacqueline Stephens, *Louisiana State University*  
 Emina Stojkovic, *Northeastern Illinois University*  
 Paul Teesdale-Spittle, *Victoria University of Wellington, New  
 Zealand*  
 Kurt Toenjjes, *Montana State University Billings*  
 Fredrik Vannberg, *Georgia Institute of Technology*  
 Pavithra Vivekanand, *Susquehanna University*  
 Claire Walczak, *Indiana University*  
 Barbara Waldman, *University of South Carolina*  
 Feng-Song Wang, *Purdue University Calumet*  
 Irving Wang, *Whitehead Institute for Biomedical Research*  
 Keith Weninger, *North Carolina State University*  
 Laurence Wong, *Canadian University College*  
 Ernest Wright, *University of California, Los Angeles*  
 Michael B. Yaffe, *Massachusetts Institute of Technology*  
 Ning Yan, *Tsinghua University*  
 Omer Yilmaz, *Massachusetts Institute of Technology*  
 Junying Yuan, *Harvard Medical School*  
 Ana Zimmerman, *College of Charleston*

We would also like to express our gratitude and appreciation to all those who contributed to the resources on LaunchPad. A full list of these contributors is posted on the *Molecular Cell Biology*, Eighth Edition, LaunchPad.

This edition would not have been possible without the careful and committed collaboration of our publishing partners at W. H. Freeman and Company. We thank Kate Ahr Parker, Beth Cole, Will Moore, Liz Geller, Norma Sims Roche, Blake Logan, Janice Donnola, Jennifer MacMillan, Sheena Goldstein, Teri Stratford, Nandini Ahuja, Abigail Fagan, Felicia Ruocco, Hilary Newman, Amy Thorne, Kathleen Wisneski, and Paul Rohloff for their labor and for their willingness to work overtime to produce a book that excels in every way.

In particular, we would like to acknowledge the talent and commitment of our text editors, Erica Champion and

Heather Moffat. They are remarkable editors. Thank you for all you've done in this edition.

We are also indebted to H. Adam Steinberg for his pedagogical insight and his development of beautiful molecular models and illustrations.

We would like to acknowledge those whose direct contributions to previous editions continue to influence in this edition, especially Ruth Steyn.

Thanks to our own staff: Sally Bittancourt, Diane Bush, Mary Anne Donovan, Carol Eng, James Evans, George Kokkinogenis, Julie Knight, Guicky Waller, Nicki Watson, and Rob Welsh.

Finally, special thanks to our families for inspiring us and for granting us the time it takes to work on such a book and to our mentors and advisers for encouraging us in our studies and teaching us much of what we know: (*Harvey Lodish*) my wife, Pamela; my children and grandchildren Heidi and Eric Steinert and Emma and Andrew Steinert; Martin Lodish, Kristin Schardt, and Sophia, Joshua, and

Tobias Lodish; and Stephanie Lodish, Bruce Peabody, and Isaac and Violet Peabody; mentors Norton Zinder and Sydney Brenner; and also David Baltimore and Jim Darnell for collaborating on the first editions of this book; (*Arnold Berk*) my wife Sally, Jerry Berk, Shirley Berk, Angelina Smith, David Clayton, and Phil Sharp; (*Chris A. Kaiser*) my wife Kathy O'Neill, my mentors David Botstein and Randy Schekman; (*Monty Krieger*) my wife Nancy Krieger, parents I. Jay Krieger and Mildred Krieger, children Joshua and Ilana Krieger and Jonathan Krieger and Sofia Colucci, and grandchild Joaquin Krieger; my mentors Robert Stroud, Michael Brown, and Joseph Goldstein; (*Anthony Bretscher*) my wife Janice and daughters Heidi and Erika, and advisers A. Dale Kaiser and Klaus Weber; (*Hidde Ploegh*) my wife Anne Mahon; (*Angelika Amon*) my husband Johannes Weis, Theresa and Clara Weis, Gerry Fink and Frank Solomon; (*Kelsey C. Martin*) my husband Joel Braslow, children Seth, Ben, Sam, and Maya, father George M. Martin, and mentors Ari Helenius and Eric Kandel.

# CONTENTS IN BRIEF

## **Part I** Chemical and Molecular Foundations

- 1 Molecules, Cells, and Model Organisms 1
- 2 Chemical Foundations 31
- 3 Protein Structure and Function 67
- 4 Culturing and Visualizing Cells 129

## **Part II** Biomembranes, Genes, and Gene Regulation

- 5 Fundamental Molecular Genetic Mechanisms 167
- 6 Molecular Genetic Techniques 223
- 7 Biomembrane Structure 271
- 8 Genes, Genomics, and Chromosomes 301
- 9 Transcriptional Control of Gene Expression 353
- 10 Post-transcriptional Gene Control 417

## **Part III** Cellular Organization and Function

- 11 Transmembrane Transport of Ions and Small Molecules 473
- 12 Cellular Energetics 513
- 13 Moving Proteins into Membranes and Organelles 583
- 14 Vesicular Traffic, Secretion, and Endocytosis 631
- 15 Signal Transduction and G Protein–Coupled Receptors 673
- 16 Signaling Pathways That Control Gene Expression 719
- 17 Cell Organization and Movement I: Microfilaments 775
- 18 Cell Organization and Movement II: Microtubules and Intermediate Filaments 821
- 19 The Eukaryotic Cell Cycle 873

## **Part IV** Cell Growth and Differentiation

- 20 Integrating Cells into Tissues 921
- 21 Stem Cells, Cell Asymmetry, and Cell Death 975
- 22 Cells of the Nervous System 1025
- 23 Immunology 1079
- 24 Cancer 1135

# CONTENTS

Preface

vii

## Part I Chemical and Molecular Foundations

### 1 Molecules, Cells, and Model Organisms 1

#### 1.1 The Molecules of Life 5

Proteins Give Cells Structure and Perform Most Cellular Tasks 7

Nucleic Acids Carry Coded Information for Making Proteins at the Right Time and Place 7

Phospholipids Are the Conserved Building Blocks of All Cellular Membranes 9

#### 1.2 Prokaryotic Cell Structure and Function 10

Prokaryotes Comprise Two Kingdoms: Archaea and Eubacteria 10

*Escherichia coli* Is Widely Used in Biological Research 11

#### 1.3 Eukaryotic Cell Structure and Function 12

The Cytoskeleton Has Many Important Functions 12

The Nucleus Contains the DNA Genome, RNA Synthetic Apparatus, and a Fibrous Matrix 12

Eukaryotic Cells Contain a Large Number of Internal Membrane Structures 14

Mitochondria Are the Principal Sites of ATP Production in Aerobic Cells 18

Chloroplasts Contain Internal Compartments in Which Photosynthesis Takes Place 18

All Eukaryotic Cells Use a Similar Cycle to Regulate Their Division 18

#### 1.4 Unicellular Eukaryotic Model Organisms 19

Yeasts Are Used to Study Fundamental Aspects of Eukaryotic Cell Structure and Function 19

Mutations in Yeast Led to the Identification of Key Cell Cycle Proteins 21

Studies in the Alga *Chlamydomonas reinhardtii* Led to the Development of a Powerful Technique to Study Brain Function 22

The Parasite That Causes Malaria Has Novel Organelles That Allow It to Undergo a Remarkable Life Cycle 22

### 1.5 Metazoan Structure, Differentiation, and Model Organisms 24

Multicellularity Requires Cell-Cell and Cell-Matrix Adhesions 24

Epithelia Originated Early in Evolution 24

Tissues Are Organized into Organs 24

Genomics Has Revealed Important Aspects of Metazoan Evolution and Cell Function 24

Embryonic Development Uses a Conserved Set of Master Transcription Factors 25

Planaria Are Used to Study Stem Cells and Tissue Regeneration 27

Invertebrates, Fish, Mice, and Other Organisms Serve as Experimental Systems for Study of Human Development and Disease 28

Genetic Diseases Elucidate Important Aspects of Cell Function 28

The Following Chapters Present Much Experimental Data That Explains How We Know What We Know About Cell Structure and Function 29

### 2 Chemical Foundations 31

#### 2.1 Covalent Bonds and Noncovalent Interactions 33

The Electronic Structure of an Atom Determines the Number and Geometry of the Covalent Bonds It Can Make 33

Electrons May Be Shared Equally or Unequally in Covalent Bonds 34

Covalent Bonds Are Much Stronger and More Stable Than Noncovalent Interactions 36

Ionic Interactions Are Attractions Between Oppositely Charged Ions 36

Hydrogen Bonds Are Noncovalent Interactions That Determine the Water Solubility of Uncharged Molecules 37

Van der Waals Interactions Are Weak Attractive Interactions Caused by Transient Dipoles 38

The Hydrophobic Effect Causes Nonpolar Molecules to Adhere to One Another	39	NAD <sup>+</sup> and FAD Couple Many Biological Oxidation and Reduction Reactions	63
Molecular Complementarity Due to Noncovalent Interactions Leads to a Lock-and-Key Fit Between Biomolecules	40	<b>3 Protein Structure and Function 67</b>	
<b>2.2 Chemical Building Blocks of Cells 41</b>		<b>3.1 Hierarchical Structure of Proteins 69</b>	
Amino Acids Differing Only in Their Side Chains Compose Proteins	42	The Primary Structure of a Protein Is Its Linear Arrangement of Amino Acids	69
Five Different Nucleotides Are Used to Build Nucleic Acids	45	Secondary Structures Are the Core Elements of Protein Architecture	70
Monosaccharides Covalently Assemble into Linear and Branched Polysaccharides	46	Tertiary Structure Is the Overall Folding of a Polypeptide Chain	72
Phospholipids Associate Noncovalently to Form the Basic Bilayer Structure of Biomembranes	48	There Are Four Broad Structural Categories of Proteins	72
<b>2.3 Chemical Reactions and Chemical Equilibrium 51</b>		Different Ways of Depicting the Conformation of Proteins Convey Different Types of Information	74
A Chemical Reaction Is in Equilibrium When the Rates of the Forward and Reverse Reactions Are Equal	52	Structural Motifs Are Regular Combinations of Secondary Structures	75
The Equilibrium Constant Reflects the Extent of a Chemical Reaction	52	Domains Are Modules of Tertiary Structure	76
Chemical Reactions in Cells Are at Steady State	52	Multiple Polypeptides Assemble into Quaternary Structures and Supramolecular Complexes	78
Dissociation Constants of Binding Reactions Reflect the Affinity of Interacting Molecules	53	Comparing Protein Sequences and Structures Provides Insight into Protein Function and Evolution	79
Biological Fluids Have Characteristic pH Values	54	<b>3.2 Protein Folding 81</b>	
Hydrogen Ions Are Released by Acids and Taken Up by Bases	55	Planar Peptide Bonds Limit the Shapes into Which Proteins Can Fold	81
Buffers Maintain the pH of Intracellular and Extracellular Fluids	55	The Amino Acid Sequence of a Protein Determines How It Will Fold	81
<b>2.4 Biochemical Energetics 57</b>		Folding of Proteins in Vivo Is Promoted by Chaperones	82
Several Forms of Energy Are Important in Biological Systems	57	Protein Folding Is Promoted by Proline Isomerases	86
Cells Can Transform One Type of Energy into Another	58	Abnormally Folded Proteins Can Form Amyloids That Are Implicated in Diseases	87
The Change in Free Energy Determines If a Chemical Reaction Will Occur Spontaneously	58	<b>3.3 Protein Binding and Enzyme Catalysis 89</b>	
The $\Delta G^{\circ}$ of a Reaction Can Be Calculated from Its $K_{eq}$	60	Specific Binding of Ligands Underlies the Functions of Most Proteins	89
The Rate of a Reaction Depends on the Activation Energy Necessary to Energize the Reactants into a Transition State	60	Enzymes Are Highly Efficient and Specific Catalysts	90
Life Depends on the Coupling of Unfavorable Chemical Reactions with Energetically Favorable Ones	61	An Enzyme's Active Site Binds Substrates and Carries Out Catalysis	91
Hydrolysis of ATP Releases Substantial Free Energy and Drives Many Cellular Processes	61	Serine Proteases Demonstrate How an Enzyme's Active Site Works	92
ATP Is Generated During Photosynthesis and Respiration	62	Enzymes in a Common Pathway Are Often Physically Associated with One Another	96
		<b>3.4 Regulating Protein Function 97</b>	
		Regulated Synthesis and Degradation of Proteins Is a Fundamental Property of Cells	97
		The Proteasome Is a Molecular Machine Used to Degrade Proteins	97

Ubiquitin Marks Cytosolic Proteins for Degradation in Proteasomes	99	Growth of Cells in Two-Dimensional and Three-Dimensional Culture Mimics the In Vivo Environment	133
Noncovalent Binding Permits Allosteric, or Cooperative, Regulation of Proteins	100	Hybridomas Produce Abundant Monoclonal Antibodies	135
Noncovalent Binding of Calcium and GTP Are Widely Used as Allosteric Switches to Control Protein Activity	101	A Wide Variety of Cell Biological Processes Can Be Studied with Cultured Cells	136
Phosphorylation and Dephosphorylation Covalently Regulate Protein Activity	102	Drugs Are Commonly Used in Cell Biological Research	136
Ubiquitinylation and Deubiquitinylation Covalently Regulate Protein Activity	103		
Proteolytic Cleavage Irreversibly Activates or Inactivates Some Proteins	104	<b>4.2 Light Microscopy: Exploring Cell Structure and Visualizing Proteins Within Cells</b>	<b>139</b>
Higher-Order Regulation Includes Control of Protein Location	105	The Resolution of the Conventional Light Microscope Is About 0.2 $\mu\text{m}$	139
<b>3.5 Purifying, Detecting, and Characterizing Proteins</b>	<b>105</b>	Phase-Contrast and Differential-Interference-Contrast Microscopy Visualize Unstained Live Cells	141
Centrifugation Can Separate Particles and Molecules That Differ in Mass or Density	106	Imaging Subcellular Details Often Requires That Specimens Be Fixed, Sectioned, and Stained	142
Electrophoresis Separates Molecules on the Basis of Their Charge-to-Mass Ratio	107	Fluorescence Microscopy Can Localize and Quantify Specific Molecules in Live Cells	143
Liquid Chromatography Resolves Proteins by Mass, Charge, or Affinity	109	Intracellular Ion Concentrations Can Be Determined with Ion-Sensitive Fluorescent Dyes	143
Highly Specific Enzyme and Antibody Assays Can Detect Individual Proteins	111	Immunofluorescence Microscopy Can Detect Specific Proteins in Fixed Cells	144
Radioisotopes Are Indispensable Tools for Detecting Biological Molecules	114	Tagging with Fluorescent Proteins Allows the Visualization of Specific Proteins in Live Cells	146
Mass Spectrometry Can Determine the Mass and Sequence of Proteins	116	Deconvolution and Confocal Microscopy Enhance Visualization of Three-Dimensional Fluorescent Objects	147
Protein Primary Structure Can Be Determined by Chemical Methods and from Gene Sequences	118	Two-Photon Excitation Microscopy Allows Imaging Deep into Tissue Samples	149
Protein Conformation Is Determined by Sophisticated Physical Methods	119	TIRF Microscopy Provides Exceptional Imaging in One Focal Plane	150
<b>3.6 Proteomics</b>	<b>122</b>	FRAP Reveals the Dynamics of Cellular Components	151
Proteomics Is the Study of All or a Large Subset of Proteins in a Biological System	122	FRET Measures Distance Between Fluorochromes	152
Advanced Techniques in Mass Spectrometry Are Critical to Proteomic Analysis	123	Super-Resolution Microscopy Can Localize Proteins to Nanometer Accuracy	153
		Light-Sheet Microscopy Can Rapidly Image Cells in Living Tissue	155
<b>4 Culturing and Visualizing Cells</b>	<b>129</b>	<b>4.3 Electron Microscopy: High-Resolution Imaging</b>	<b>156</b>
<b>4.1 Growing and Studying Cells in Culture</b>	<b>130</b>	Single Molecules or Structures Can Be Imaged Using a Negative Stain or Metal Shadowing	157
Culture of Animal Cells Requires Nutrient-Rich Media and Special Solid Surfaces	130	Cells and Tissues Are Cut into Thin Sections for Viewing by Electron Microscopy	158
Primary Cell Cultures and Cell Strains Have a Finite Life Span	131	Immunoelectron Microscopy Localizes Proteins at the Ultrastructural Level	159
Transformed Cells Can Grow Indefinitely in Culture	132	Cryoelectron Microscopy Allows Visualization of Specimens Without Fixation or Staining	160
Flow Cytometry Separates Different Cell Types	132		



Scanning Electron Microscopy of Metal-Coated Specimens Reveals Surface Features 161

#### **4.4 Isolation of Cell Organelles** 161

Disruption of Cells Releases Their Organelles and Other Contents 162

Centrifugation Can Separate Many Types of Organelles 162

Organelle-Specific Antibodies Are Useful in Preparing Highly Purified Organelles 162

Proteomics Reveals the Protein Composition of Organelles 164

## **Part II Biomembranes, Genes, and Gene Regulation**

### **5 Fundamental Molecular Genetic Mechanisms** 167

#### **5.1 Structure of Nucleic Acids** 169

A Nucleic Acid Strand Is a Linear Polymer with End-to-End Directionality 170

Native DNA Is a Double Helix of Complementary Antiparallel Strands 170

DNA Can Undergo Reversible Strand Separation 172

Torsional Stress in DNA Is Relieved by Enzymes 174

Different Types of RNA Exhibit Various Conformations Related to Their Functions 174

#### **5.2 Transcription of Protein-Coding Genes and Formation of Functional mRNA** 176

A Template DNA Strand Is Transcribed into a Complementary RNA Chain by RNA Polymerase 176

Organization of Genes Differs in Prokaryotic and Eukaryotic DNA 179

Eukaryotic Precursor mRNAs Are Processed to Form Functional mRNAs 180

Alternative RNA Splicing Increases the Number of Proteins Expressed from a Single Eukaryotic Gene 181

#### **5.3 The Decoding of mRNA by tRNAs** 183

Messenger RNA Carries Information from DNA in a Three-Letter Genetic Code 183

The Folded Structure of tRNA Promotes Its Decoding Functions 185

Nonstandard Base Pairing Often Occurs Between Codons and Anticodons 186

Amino Acids Become Activated When Covalently Linked to tRNAs 188

#### **5.4 Stepwise Synthesis of Proteins on Ribosomes** 188

Ribosomes Are Protein-Synthesizing Machines 188

Methionyl-tRNA<sup>Met</sup> Recognizes the AUG Start Codon 190

Eukaryotic Translation Initiation Usually Occurs at the First AUG Downstream from the 5' End of an mRNA 191

During Chain Elongation Each Incoming Aminoacyl-tRNA Moves Through Three Ribosomal Sites 193

Translation Is Terminated by Release Factors When a Stop Codon Is Reached 195

Polysomes and Rapid Ribosome Recycling Increase the Efficiency of Translation 195

GTPase-Superfamily Proteins Function in Several Quality-Control Steps of Translation 195

Nonsense Mutations Cause Premature Termination of Protein Synthesis 196

#### **5.5 DNA Replication** 197

DNA Polymerases Require a Primer to Initiate Replication 197

Duplex DNA Is Unwound, and Daughter Strands Are Formed at the DNA Replication Fork 199

Several Proteins Participate in DNA Replication 199

DNA Replication Occurs Bidirectionally from Each Origin 201

#### **5.6 DNA Repair and Recombination** 203

DNA Polymerases Introduce Copying Errors and Also Correct Them 203

Chemical and Radiation Damage to DNA Can Lead to Mutations 203

High-Fidelity DNA Excision-Repair Systems Recognize and Repair Damage 204

Base Excision Repairs T-G Mismatches and Damaged Bases 205

Mismatch Excision Repairs Other Mismatches and Small Insertions and Deletions 205

Nucleotide Excision Repairs Chemical Adducts that Distort Normal DNA Shape 206

Two Systems Use Recombination to Repair Double-Strand Breaks in DNA 207

Homologous Recombination Can Repair DNA Damage and Generate Genetic Diversity 209

#### **5.7 Viruses: Parasites of the Cellular Genetic System** 212

Most Viral Host Ranges Are Narrow 212

Viral Capsids Are Regular Arrays of One or a Few Types of Protein 213

Viruses Can Be Cloned and Counted in Plaque Assays	213
Lytic Viral Growth Cycles Lead to Death of Host Cells	213
Viral DNA Is Integrated into the Host-Cell Genome in Some Nonlytic Viral Growth Cycles	216

## 6 Molecular Genetic Techniques 223

### 6.1 Genetic Analysis of Mutations to Identify and Study Genes 224

Recessive and Dominant Mutant Alleles Generally Have Opposite Effects on Gene Function	224
Segregation of Mutations in Breeding Experiments Reveals Their Dominance or Recessivity	225
Conditional Mutations Can Be Used to Study Essential Genes in Yeast	227
Recessive Lethal Mutations in Diploids Can Be Identified by Inbreeding and Maintained in Heterozygotes	228
Complementation Tests Determine Whether Different Recessive Mutations Are in the Same Gene	229
Double Mutants Are Useful in Assessing the Order in Which Proteins Function	230
Genetic Suppression and Synthetic Lethality Can Reveal Interacting or Redundant Proteins	231
Genes Can Be Identified by Their Map Position on the Chromosome	232

### 6.2 DNA Cloning and Characterization 234

Restriction Enzymes and DNA Ligases Allow Insertion of DNA Fragments into Cloning Vectors	234
Isolated DNA Fragments Can Be Cloned into <i>E. coli</i> Plasmid Vectors	236
Yeast Genomic Libraries Can Be Constructed with Shuttle Vectors and Screened by Functional Complementation	237
cDNA Libraries Represent the Sequences of Protein-Coding Genes	238
The Polymerase Chain Reaction Amplifies a Specific DNA Sequence from a Complex Mixture	239
Cloned DNA Molecules Can Be Sequenced Rapidly by Methods Based on PCR	243

### 6.3 Using Cloned DNA Fragments to Study Gene Expression 246

Hybridization Techniques Permit Detection of Specific DNA Fragments and mRNAs	246
DNA Microarrays Can Be Used to Evaluate the Expression of Many Genes at One Time	247
Cluster Analysis of Multiple Expression Experiments Identifies Co-regulated Genes	248
<i>E. coli</i> Expression Systems Can Produce Large Quantities of Proteins from Cloned Genes	249

Plasmid Expression Vectors Can Be Designed for Use in Animal Cells	251
--	-----

### 6.4 Locating and Identifying Human Disease Genes 254

Monogenic Diseases Show One of Three Patterns of Inheritance	254
DNA Polymorphisms Are Used as Markers for Linkage Mapping of Human Mutations	255
Linkage Studies Can Map Disease Genes with a Resolution of About 1 Centimorgan	256
Further Analysis Is Needed to Locate a Disease Gene in Cloned DNA	257
Many Inherited Diseases Result from Multiple Genetic Defects	257

### 6.5 Inactivating the Function of Specific Genes in Eukaryotes 259

Normal Yeast Genes Can Be Replaced with Mutant Alleles by Homologous Recombination	260
Genes Can Be Placed Under the Control of an Experimentally Regulated Promoter	260
Specific Genes Can Be Permanently Inactivated in the Germ Line of Mice	261
Somatic Cell Recombination Can Inactivate Genes in Specific Tissues	261
Dominant-Negative Alleles Can Inhibit the Function of Some Genes	262
RNA Interference Causes Gene Inactivation by Destroying the Corresponding mRNA	264
Engineered CRISPR–Cas9 Systems Allow Precise Genome Editing	266

## 7 Biomembrane Structure 271

### 7.1 The Lipid Bilayer: Composition and Structural Organization 273

Phospholipids Spontaneously Form Bilayers	273
Phospholipid Bilayers Form a Sealed Compartment Surrounding an Internal Aqueous Space	274
Biomembranes Contain Three Principal Classes of Lipids	276
Most Lipids and Many Proteins Are Laterally Mobile in Biomembranes	278
Lipid Composition Influences the Physical Properties of Membranes	279
Lipid Composition Is Different in the Exoplasmic and Cytosolic Leaflets	281
Cholesterol and Sphingolipids Cluster with Specific Proteins in Membrane Microdomains	282
Cells Store Excess Lipids in Lipid Droplets	283

## **7.2 Membrane Proteins: Structure and Basic Functions** 284

Proteins Interact with Membranes in Three Different Ways	284
Most Transmembrane Proteins Have Membrane-Spanning $\alpha$ Helices	285
Multiple $\beta$ Strands in Porins Form Membrane-Spanning "Barrels"	288
Covalently Attached Lipids Anchor Some Proteins to Membranes	288
All Transmembrane Proteins and Glycolipids Are Asymmetrically Oriented in the Bilayer	289
Lipid-Binding Motifs Help Target Peripheral Proteins to the Membrane	290
Proteins Can Be Removed from Membranes by Detergents or High-Salt Solutions	290

## **7.3 Phospholipids, Sphingolipids, and Cholesterol: Synthesis and Intracellular Movement** 293

Fatty Acids Are Assembled from Two-Carbon Building Blocks by Several Important Enzymes	293
Small Cytosolic Proteins Facilitate Movement of Fatty Acids	293
Fatty Acids Are Incorporated into Phospholipids Primarily on the ER Membrane	294
Flippases Move Phospholipids from One Membrane Leaflet to the Opposite Leaflet	295
Cholesterol Is Synthesized by Enzymes in the Cytosol and ER Membrane	295
Cholesterol and Phospholipids Are Transported Between Organelles by Several Mechanisms	296

## **8 Genes, Genomics, and Chromosomes** 301

### **8.1 Eukaryotic Gene Structure** 303

Most Eukaryotic Genes Contain Introns and Produce mRNAs Encoding Single Proteins	303
Simple and Complex Transcription Units Are Found in Eukaryotic Genomes	303
Protein-Coding Genes May Be Solitary or Belong to a Gene Family	305
Heavily Used Gene Products Are Encoded by Multiple Copies of Genes	307
Nonprotein-Coding Genes Encode Functional RNAs	308

### **8.2 Chromosomal Organization of Genes and Noncoding DNA** 309

Genomes of Many Organisms Contain Nonfunctional DNA	309
Most Simple-Sequence DNAs Are Concentrated in Specific Chromosomal Locations	310

DNA Fingerprinting Depends on Differences in Length of Simple-Sequence DNAs	311
Unclassified Intergenic DNA Occupies a Significant Portion of the Genome	312

### **8.3 Transposable (Mobile) DNA Elements** 312

Movement of Mobile Elements Involves a DNA or an RNA Intermediate	313
DNA Transposons Are Present in Prokaryotes and Eukaryotes	314
LTR Retrotransposons Behave Like Intracellular Retroviruses	316
Non-LTR Retrotransposons Transpose by a Distinct Mechanism	318
Other Retroposed RNAs Are Found in Genomic DNA	321
Mobile DNA Elements Have Significantly Influenced Evolution	321

### **8.4 Genomics: Genome-Wide Analysis of Gene Structure and Function** 323

Stored Sequences Suggest Functions of Newly Identified Genes and Proteins	324
Comparison of Related Sequences from Different Species Can Give Clues to Evolutionary Relationships Among Proteins	325
Genes Can Be Identified Within Genomic DNA Sequences	326
The Number of Protein-Coding Genes in an Organism's Genome Is Not Directly Related to Its Biological Complexity	326

### **8.5 Structural Organization of Eukaryotic Chromosomes** 327

Chromatin Exists in Extended and Condensed Forms	328
Modifications of Histone Tails Control Chromatin Condensation and Function	330
Nonhistone Proteins Organize Long Chromatin Loops	335
Additional Nonhistone Proteins Regulate Transcription and Replication	339

### **8.6 Morphology and Functional Elements of Eukaryotic Chromosomes** 341

Chromosome Number, Size, and Shape at Metaphase Are Species-Specific	341
During Metaphase, Chromosomes Can Be Distinguished by Banding Patterns and Chromosome Painting	341
Chromosome Painting and DNA Sequencing Reveal the Evolution of Chromosomes	342

Interphase Polytene Chromosomes Arise by DNA Amplification	343
Three Functional Elements Are Required for Replication and Stable Inheritance of Chromosomes	345
Centromere Sequences Vary Greatly in Length and Complexity	345
Addition of Telomeric Sequences by Telomerase Prevents Shortening of Chromosomes	347

## 9 Transcriptional Control of Gene Expression 353

### 9.1 Control of Gene Expression in Bacteria 356

Transcription Initiation by Bacterial RNA Polymerase Requires Association with a Sigma Factor	357
Initiation of <i>lac</i> Operon Transcription Can Be Repressed or Activated	357
Small Molecules Regulate Expression of Many Bacterial Genes via DNA-Binding Repressors and Activators	358
Transcription Initiation from Some Promoters Requires Alternative Sigma Factors	359
Transcription by $\sigma^{54}$ -RNA Polymerase Is Controlled by Activators That Bind Far from the Promoter	359
Many Bacterial Responses Are Controlled by Two-Component Regulatory Systems	360
Expression of Many Bacterial Operons Is Controlled by Regulation of Transcriptional Elongation	361

### 9.2 Overview of Eukaryotic Gene Control 363

Regulatory Elements in Eukaryotic DNA Are Found Both Close to and Many Kilobases Away from Transcription Start Sites	364
Three Eukaryotic RNA Polymerases Catalyze Formation of Different RNAs	367
The Largest Subunit in RNA Polymerase II Has an Essential Carboxy-Terminal Repeat	370

### 9.3 RNA Polymerase II Promoters and General Transcription Factors 371

RNA Polymerase II Initiates Transcription at DNA Sequences Corresponding to the 5' Cap of mRNAs	371
The TATA Box, Initiators, and CpG Islands Function as Promoters in Eukaryotic DNA	371
General Transcription Factors Position RNA Polymerase II at Start Sites and Assist in Initiation	373
Elongation Factors Regulate the Initial Stages of Transcription in the Promoter-Proximal Region	377

### 9.4 Regulatory Sequences in Protein-Coding Genes and the Proteins Through Which They Function 378

Promoter-Proximal Elements Help Regulate Eukaryotic Genes	378
Distant Enhancers Often Stimulate Transcription by RNA Polymerase II	379
Most Eukaryotic Genes Are Regulated by Multiple Transcription-Control Elements	379
DNase I Footprinting and EMSA Detect Protein-DNA Interactions	380
Activators Are Composed of Distinct Functional Domains	381
Repressors Are the Functional Converse of Activators	383
DNA-Binding Domains Can Be Classified into Numerous Structural Types	384
Structurally Diverse Activation and Repression Domains Regulate Transcription	386
Transcription Factor Interactions Increase Gene-Control Options	387
Multiprotein Complexes Form on Enhancers	388

### 9.5 Molecular Mechanisms of Transcription Repression and Activation 390

Formation of Heterochromatin Silences Gene Expression at Telomeres, near Centromeres, and in Other Regions	390
Repressors Can Direct Histone Deacetylation at Specific Genes	393
Activators Can Direct Histone Acetylation at Specific Genes	394
Chromatin-Remodeling Complexes Help Activate or Repress Transcription	395
Pioneer Transcription Factors Initiate the Process of Gene Activation During Cellular Differentiation	395
The Mediator Complex Forms a Molecular Bridge Between Activation Domains and Pol II	396

### 9.6 Regulation of Transcription-Factor Activity 398

DNase I Hypersensitive Sites Reflect the Developmental History of Cellular Differentiation	398
Nuclear Receptors Are Regulated by Extracellular Signals	400
All Nuclear Receptors Share a Common Domain Structure	400
Nuclear-Receptor Response Elements Contain Inverted or Direct Repeats	400
Hormone Binding to a Nuclear Receptor Regulates Its Activity as a Transcription Factor	402
Metazoans Regulate the RNA Polymerase II Transition from Initiation to Elongation	402
Termination of Transcription Is Also Regulated	402

<b>9.7 Epigenetic Regulation of Transcription</b>	<b>404</b>		
DNA Methylation Represses Transcription	404		
Methylation of Specific Histone Lysines Is Linked to Epigenetic Mechanisms of Gene Repression	405		
Epigenetic Control by Polycomb and Trithorax Complexes	406		
Long Noncoding RNAs Direct Epigenetic Repression in Metazoans	409		
<b>9.8 Other Eukaryotic Transcription Systems</b>	<b>412</b>		
Transcription Initiation by Pol I and Pol III Is Analogous to That by Pol II	412		
<b>10 Post-transcriptional Gene Control</b>	<b>417</b>		
<b>10.1 Processing of Eukaryotic Pre-mRNA</b>	<b>419</b>		
The 5' Cap Is Added to Nascent RNAs Shortly After Transcription Initiation	420		
A Diverse Set of Proteins with Conserved RNA-Binding Domains Associate with Pre-mRNAs	421		
Splicing Occurs at Short, Conserved Sequences in Pre-mRNAs via Two Transesterification Reactions	423		
During Splicing, snRNAs Base-Pair with Pre-mRNA	424		
Spliceosomes, Assembled from snRNPs and a Pre-mRNA, Carry Out Splicing	426		
Chain Elongation by RNA Polymerase II Is Coupled to the Presence of RNA-Processing Factors	428		
SR Proteins Contribute to Exon Definition in Long Pre-mRNAs	428		
Self-Splicing Group II Introns Provide Clues to the Evolution of snRNAs	429		
3' Cleavage and Polyadenylation of Pre-mRNAs Are Tightly Coupled	430		
Nuclear Exoribonucleases Degrade RNA That Is Processed Out of Pre-mRNAs	432		
RNA Processing Solves the Problem of Pervasive Transcription of the Genome in Metazoans	432		
<b>10.2 Regulation of Pre-mRNA Processing</b>	<b>435</b>		
Alternative Splicing Generates Transcripts with Different Combinations of Exons	435		
A Cascade of Regulated RNA Splicing Controls <i>Drosophila</i> Sexual Differentiation	435		
Splicing Repressors and Activators Control Splicing at Alternative Sites	437		
		RNA Editing Alters the Sequences of Some Pre-mRNAs	439
		<b>10.3 Transport of mRNA Across the Nuclear Envelope</b>	<b>440</b>
		Phosphorylation and Dephosphorylation of SR Proteins Imposes Directionality on mRNP Export Across the Nuclear Pore Complex	441
		Balbani Rings in Insect Larval Salivary Glands Allow Direct Visualization of mRNP Export Through NPCs	442
		Pre-mRNAs in Spliceosomes Are Not Exported from the Nucleus	443
		HIV Rev Protein Regulates the Transport of Unspliced Viral mRNAs	444
		<b>10.4 Cytoplasmic Mechanisms of Post-transcriptional Control</b>	<b>445</b>
		Degradation of mRNAs in the Cytoplasm Occurs by Several Mechanisms	445
		Adenines in mRNAs and lncRNAs May Be Post-transcriptionally Modified by N <sup>6</sup> Methylation	447
		Micro-RNAs Repress Translation and Induce Degradation of Specific mRNAs	447
		Alternative Polyadenylation Increases miRNA Control Options	450
		RNA Interference Induces Degradation of Precisely Complementary mRNAs	450
		Cytoplasmic Polyadenylation Promotes Translation of Some mRNAs	451
		Protein Synthesis Can Be Globally Regulated	452
		Sequence-Specific RNA-Binding Proteins Control Translation of Specific mRNAs	455
		Surveillance Mechanisms Prevent Translation of Improperly Processed mRNAs	456
		Localization of mRNAs Permits Production of Proteins at Specific Regions Within the Cytoplasm	457
		<b>10.5 Processing of rRNA and tRNA</b>	<b>461</b>
		Pre-rRNA Genes Function as Nucleolar Organizers	461
		Small Nucleolar RNAs Assist in Processing Pre-rRNAs	462
		Self-Splicing Group I Introns Were the First Examples of Catalytic RNA	466
		Pre-tRNAs Undergo Extensive Modification in the Nucleus	466
		Nuclear Bodies Are Functionally Specialized Nuclear Domains	468

## Part III Cellular Organization and Function

### 11 Transmembrane Transport of Ions and Small Molecules 473

#### 11.1 Overview of Transmembrane Transport 474

- Only Gases and Small Uncharged Molecules Cross Membranes by Simple Diffusion 474
- Three Main Classes of Membrane Proteins Transport Molecules and Ions Across Cellular Membranes 475

#### 11.2 Facilitated Transport of Glucose and Water 477

- Uniport Transport Is Faster and More Specific than Simple Diffusion 477
- The Low  $K_m$  of the GLUT1 Uniporter Enables It to Transport Glucose into Most Mammalian Cells 478
- The Human Genome Encodes a Family of Sugar-Transporting GLUT Proteins 480
- Transport Proteins Can Be Studied Using Artificial Membranes and Recombinant Cells 480
- Osmotic Pressure Causes Water to Move Across Membranes 481
- Aquaporins Increase the Water Permeability of Cellular Membranes 481

#### 11.3 ATP-Powered Pumps and the Intracellular Ionic Environment 483

- There Are Four Main Classes of ATP-Powered Pumps 484
- ATP-Powered Ion Pumps Generate and Maintain Ionic Gradients Across Cellular Membranes 485
- Muscle Relaxation Depends on  $\text{Ca}^{2+}$  ATPases That Pump  $\text{Ca}^{2+}$  from the Cytosol into the Sarcoplasmic Reticulum 486
- The Mechanism of Action of the  $\text{Ca}^{2+}$  Pump Is Known in Detail 486
- Calmodulin Regulates the Plasma-Membrane Pumps That Control Cytosolic  $\text{Ca}^{2+}$  Concentrations 489
- The  $\text{Na}^+/\text{K}^+$  ATPase Maintains the Intracellular  $\text{Na}^+$  and  $\text{K}^+$  Concentrations in Animal Cells 489
- V-Class  $\text{H}^+$  ATPases Maintain the Acidity of Lysosomes and Vacuoles 489
- ABC Proteins Export a Wide Variety of Drugs and Toxins from the Cell 491
- Certain ABC Proteins “Flip” Phospholipids and Other Lipid-Soluble Substrates from One Membrane Leaflet to the Other 493
- The ABC Cystic Fibrosis Transmembrane Regulator Is a Chloride Channel, Not a Pump 494

#### 11.4 Nongated Ion Channels and the Resting Membrane Potential 495

- Selective Movement of Ions Creates a Transmembrane Electric Gradient 495
- The Resting Membrane Potential in Animal Cells Depends Largely on the Outward Flow of  $\text{K}^+$  Ions Through Open  $\text{K}^+$  Channels 497
- Ion Channels Are Selective for Certain Ions by Virtue of a Molecular “Selectivity Filter” 497
- Patch Clamps Permit Measurement of Ion Movements Through Single Channels 500
- Novel Ion Channels Can Be Characterized by a Combination of Oocyte Expression and Patch Clamping 501

#### 11.5 Cotransport by Symporters and Antiporters 502

- $\text{Na}^+$  Entry into Mammalian Cells Is Thermodynamically Favored 502
- $\text{Na}^+$ -Linked Symporters Enable Animal Cells to Import Glucose and Amino Acids Against High Concentration Gradients 503
- A Bacterial  $\text{Na}^+$ /Amino Acid Symporter Reveals How Symport Works 504
- A  $\text{Na}^+$ -Linked  $\text{Ca}^{2+}$  Antiporter Regulates the Strength of Cardiac Muscle Contraction 504
- Several Cotransporters Regulate Cytosolic pH 505
- An Anion Antiporter Is Essential for Transport of  $\text{CO}_2$  by Erythrocytes 506
- Numerous Transport Proteins Enable Plant Vacuoles to Accumulate Metabolites and Ions 507

#### 11.6 Transcellular Transport 508

- Multiple Transport Proteins Are Needed to Move Glucose and Amino Acids Across Epithelia 508
- Simple Rehydration Therapy Depends on the Osmotic Gradient Created by Absorption of Glucose and  $\text{Na}^+$  509
- Parietal Cells Acidify the Stomach Contents While Maintaining a Neutral Cytosolic pH 509
- Bone Resorption Requires the Coordinated Function of a V-Class Proton Pump and a Specific Chloride Channel 510

### 12 Cellular Energetics 513

#### 12.1 First Step of Harvesting Energy from Glucose: Glycolysis 515

- During Glycolysis (Stage I), Cytosolic Enzymes Convert Glucose to Pyruvate 516
- The Rate of Glycolysis Is Adjusted to Meet the Cell’s Need for ATP 516
- Glucose Is Fermented When Oxygen Is Scarce 518

<b>12.2 The Structure and Functions of Mitochondria</b>	<b>520</b>		
Mitochondria Are Multifunctional Organelles	520		
Mitochondria Have Two Structurally and Functionally Distinct Membranes	520		
Mitochondria Contain DNA Located in the Matrix	523		
The Size, Structure, and Coding Capacity of mtDNA Vary Considerably Among Organisms	525		
Products of Mitochondrial Genes Are Not Exported	526		
Mitochondria Evolved from a Single Endosymbiotic Event Involving a <i>Rickettsia</i> -Like Bacterium	527		
Mitochondrial Genetic Codes Differ from the Standard Nuclear Code	527		
Mutations in Mitochondrial DNA Cause Several Genetic Diseases in Humans	528		
Mitochondria Are Dynamic Organelles That Interact Directly with One Another	528		
Mitochondria Are Influenced by Direct Contacts with the Endoplasmic Reticulum	529		
		Experiments Using Purified Electron-Transport Chain Complexes Established the Stoichiometry of Proton Pumping	549
		The Proton-Motive Force in Mitochondria Is Due Largely to a Voltage Gradient Across the Inner Membrane	550
<b>12.3 The Citric Acid Cycle and Fatty Acid Oxidation</b>	<b>533</b>	<b>12.5 Harnessing the Proton-Motive Force to Synthesize ATP</b>	<b>551</b>
In the First Part of Stage II, Pyruvate Is Converted to Acetyl CoA and High-Energy Electrons	533	The Mechanism of ATP Synthesis Is Shared Among Bacteria, Mitochondria, and Chloroplasts	552
In the Second Part of Stage II, the Citric Acid Cycle Oxidizes the Acetyl Group in Acetyl CoA to CO <sub>2</sub> and Generates High-Energy Electrons	533	ATP Synthase Comprises F <sub>0</sub> and F <sub>1</sub> Multiprotein Complexes	553
Transporters in the Inner Mitochondrial Membrane Help Maintain Appropriate Cytosolic and Matrix Concentrations of NAD <sup>+</sup> and NADH	535	Rotation of the F <sub>1</sub> γ Subunit, Driven by Proton Movement Through F <sub>0</sub> , Powers ATP Synthesis	554
Mitochondrial Oxidation of Fatty Acids Generates ATP	536	Multiple Protons Must Pass Through ATP Synthase to Synthesize One ATP	555
Peroxisomal Oxidation of Fatty Acids Generates No ATP	537	F <sub>0</sub> c Ring Rotation Is Driven by Protons Flowing Through Transmembrane Channels	556
		ATP-ADP Exchange Across the Inner Mitochondrial Membrane Is Powered by the Proton-Motive Force	556
		The Rate of Mitochondrial Oxidation Normally Depends on ADP Levels	558
		Mitochondria in Brown Fat Use the Proton-Motive Force to Generate Heat	558
<b>12.4 The Electron-Transport Chain and Generation of the Proton-Motive Force</b>	<b>539</b>	<b>12.6 Photosynthesis and Light-Absorbing Pigments</b>	<b>560</b>
Oxidation of NADH and FADH <sub>2</sub> Releases a Significant Amount of Energy	539	Thylakoid Membranes in Chloroplasts Are the Sites of Photosynthesis in Plants	560
Electron Transport in Mitochondria Is Coupled to Proton Pumping	539	Chloroplasts Contain Large DNAs Often Encoding More Than a Hundred Proteins	560
Electrons Flow “Downhill” Through a Series of Electron Carriers	540	Three of the Four Stages in Photosynthesis Occur Only During Illumination	561
Four Large Multiprotein Complexes Couple Electron Transport to Proton Pumping Across the Inner Mitochondrial Membrane	542	Photosystems Comprise a Reaction Center and Associated Light-Harvesting Complexes	563
The Reduction Potentials of Electron Carriers in the Electron-Transport Chain Favor Electron Flow from NADH to O <sub>2</sub>	546	Photoelectron Transport from Energized Reaction-Center Chlorophyll <i>a</i> Produces a Charge Separation	564
The Multiprotein Complexes of the Electron-Transport Chain Assemble into Supercomplexes	546	Internal Antennas and Light-Harvesting Complexes Increase the Efficiency of Photosynthesis	566
Reactive Oxygen Species Are By-Products of Electron Transport	547	<b>12.7 Molecular Analysis of Photosystems</b>	<b>567</b>
		The Single Photosystem of Purple Bacteria Generates a Proton-Motive Force but No O <sub>2</sub>	567
		Chloroplasts Contain Two Functionally and Spatially Distinct Photosystems	567
		Linear Electron Flow Through Both Plant Photosystems Generates a Proton-Motive Force, O <sub>2</sub> , and NADPH	568
		An Oxygen-Evolving Complex Is Located on the Luminal Surface of the PSII Reaction Center	569
		Multiple Mechanisms Protect Cells Against Damage from Reactive Oxygen Species During Photoelectron Transport	570

Cyclic Electron Flow Through PSI Generates a Proton-Motive Force but No NADPH or O <sub>2</sub>	570
Relative Activities of Photosystems I and II Are Regulated	571

### **12.8 CO<sub>2</sub> Metabolism During Photosynthesis** 573

Rubisco Fixes CO <sub>2</sub> in the Chloroplast Stroma	573
Synthesis of Sucrose Using Fixed CO <sub>2</sub> Is Completed in the Cytosol	573
Light and Rubisco Activase Stimulate CO <sub>2</sub> Fixation	574
Photorespiration Competes with Carbon Fixation and Is Reduced in C <sub>4</sub> Plants	576

## **13 Moving Proteins into Membranes and Organelles** 583

### **13.1 Targeting Proteins To and Across the ER Membrane** 585

Pulse-Chase Experiments with Purified ER Membranes Demonstrated That Secreted Proteins Cross the ER Membrane	586
A Hydrophobic N-Terminal Signal Sequence Targets Nascent Secretory Proteins to the ER	586
Cotranslational Translocation Is Initiated by Two GTP-Hydrolyzing Proteins	588
Passage of Growing Polypeptides Through the Translocon Is Driven by Translation	589
ATP Hydrolysis Powers Post-translational Translocation of Some Secretory Proteins in Yeast	591

### **13.2 Insertion of Membrane Proteins into the ER** 593

Several Topological Classes of Integral Membrane Proteins Are Synthesized on the ER	593
Internal Stop-Transfer Anchor and Signal-Anchor Sequences Determine Topology of Single-Pass Proteins	594
Multipass Proteins Have Multiple Internal Topogenic Sequences	597
A Phospholipid Anchor Tethers Some Cell-Surface Proteins to the Membrane	598
The Topology of a Membrane Protein Can Often Be Deduced from Its Sequence	599

### **13.3 Protein Modifications, Folding, and Quality Control in the ER** 601

A Preformed N-Linked Oligosaccharide Is Added to Many Proteins in the Rough ER	601
Oligosaccharide Side Chains May Promote Folding and Stability of Glycoproteins	602

Disulfide Bonds Are Formed and Rearranged by Proteins in the ER Lumen	603
Chaperones and Other ER Proteins Facilitate Folding and Assembly of Proteins	604
Improperly Folded Proteins in the ER Induce Expression of Protein-Folding Catalysts	606
Unassembled or Misfolded Proteins in the ER Are Often Transported to the Cytosol for Degradation	607

### **13.4 Targeting of Proteins to Mitochondria and Chloroplasts** 608

Amphipathic N-Terminal Targeting Sequences Direct Proteins to the Mitochondrial Matrix	609
Mitochondrial Protein Import Requires Outer-Membrane Receptors and Translocons in Both Membranes	610
Studies with Chimeric Proteins Demonstrate Important Features of Mitochondrial Protein Import	612
Three Energy Inputs Are Needed to Import Proteins into Mitochondria	613
Multiple Signals and Pathways Target Proteins to Submitochondrial Compartments	613
Import of Chloroplast Stromal Proteins Is Similar to Import of Mitochondrial Matrix Proteins	617
Proteins Are Targeted to Thylakoids by Mechanisms Related to Bacterial Protein Translocation	617

### **13.5 Targeting of Peroxisomal Proteins** 619

A Cytosolic Receptor Targets Proteins with an SKL Sequence at the C-Terminus to the Peroxisomal Matrix	619
Peroxisomal Membrane and Matrix Proteins Are Incorporated by Different Pathways	621

### **13.6 Transport Into and Out of the Nucleus** 622

Large and Small Molecules Enter and Leave the Nucleus via Nuclear Pore Complexes	622
Nuclear Transport Receptors Escort Proteins Containing Nuclear-Localization Signals into the Nucleus	624
A Second Type of Nuclear Transport Receptor Escorts Proteins Containing Nuclear-Export Signals Out of the Nucleus	625
Most mRNAs Are Exported from the Nucleus by a Ran-Independent Mechanism	627

## **14 Vesicular Traffic, Secretion, and Endocytosis** 631

### **14.1 Techniques for Studying the Secretory Pathway** 634

Transport of a Protein Through the Secretory Pathway Can Be Assayed in Live Cells	634
---	-----



Yeast Mutants Define Major Stages and Many Components in Vesicular Transport	635	The Acidic pH of Late Endosomes Causes Most Receptor-Ligand Complexes to Dissociate	662
Cell-Free Transport Assays Allow Dissection of Individual Steps in Vesicular Transport	637	The Endocytic Pathway Delivers Iron to Cells Without Dissociation of the Transferrin–Transferrin Receptor Complex in Endosomes	663
<b>14.2 Molecular Mechanisms of Vesicle Budding and Fusion</b>	<b>638</b>	<b>14.6 Directing Membrane Proteins and Cytosolic Materials to the Lysosome</b>	<b>665</b>
Assembly of a Protein Coat Drives Vesicle Formation and Selection of Cargo Molecules	638	Multivesicular Endosomes Segregate Membrane Proteins Destined for the Lysosomal Membrane from Proteins Destined for Lysosomal Degradation	665
A Conserved Set of GTPase Switch Proteins Controls the Assembly of Different Vesicle Coats	639	Retroviruses Bud from the Plasma Membrane by a Process Similar to Formation of Multivesicular Endosomes	666
Targeting Sequences on Cargo Proteins Make Specific Molecular Contacts with Coat Proteins	641	The Autophagic Pathway Delivers Cytosolic Proteins or Entire Organelles to Lysosomes	667
Rab GTPases Control Docking of Vesicles on Target Membranes	641		
Paired Sets of SNARE Proteins Mediate Fusion of Vesicles with Target Membranes	642		
Dissociation of SNARE Complexes After Membrane Fusion Is Driven by ATP Hydrolysis	644		
<b>14.3 Early Stages of the Secretory Pathway</b>	<b>645</b>	<b>15 Signal Transduction and G Protein–Coupled Receptors</b>	<b>673</b>
COPII Vesicles Mediate Transport from the ER to the Golgi	645	<b>15.1 Signal Transduction: From Extracellular Signal to Cellular Response</b>	<b>675</b>
COPI Vesicles Mediate Retrograde Transport Within the Golgi and from the Golgi to the ER	647	Signaling Molecules Can Act Locally or at a Distance	675
Anterograde Transport Through the Golgi Occurs by Cisternal Maturation	648	Receptors Bind Only a Single Type of Hormone or a Group of Closely Related Hormones	676
		Protein Kinases and Phosphatases Are Employed in Many Signaling Pathways	676
		GTP-Binding Proteins Are Frequently Used in Signal Transduction Pathways as On/Off Switches	677
		Intracellular “Second Messengers” Transmit Signals from Many Receptors	678
		Signal Transduction Pathways Can Amplify the Effects of Extracellular Signals	679
		<b>15.2 Studying Cell-Surface Receptors and Signal Transduction Proteins</b>	<b>681</b>
<b>14.4 Later Stages of the Secretory Pathway</b>	<b>650</b>	The Dissociation Constant Is a Measure of the Affinity of a Receptor for Its Ligand	681
Vesicles Coated with Clathrin and Adapter Proteins Mediate Transport from the <i>trans</i> -Golgi	651	Binding Assays Are Used to Detect Receptors and Determine Their Affinity and Specificity for Ligands	681
Dynamin Is Required for Pinching Off of Clathrin-Coated Vesicles	652	Near-Maximal Cellular Response to a Signaling Molecule Usually Does Not Require Activation of All Receptors	682
Mannose 6-Phosphate Residues Target Soluble Proteins to Lysosomes	653	Sensitivity of a Cell to External Signals Is Determined by the Number of Cell-Surface Receptors and Their Affinity for Ligand	683
Study of Lysosomal Storage Diseases Revealed Key Components of the Lysosomal Sorting Pathway	655	Hormone Analogs Are Widely Used as Drugs	683
Protein Aggregation in the <i>trans</i> -Golgi May Function in Sorting Proteins to Regulated Secretory Vesicles	655	Receptors Can Be Purified by Affinity Chromatography Techniques	683
Some Proteins Undergo Proteolytic Processing After Leaving the <i>trans</i> -Golgi	656	Immunoprecipitation Assays and Affinity Techniques Can Be Used to Study the Activity of Signal Transduction Proteins	684
Several Pathways Sort Membrane Proteins to the Apical or Basolateral Region of Polarized Cells	657		
<b>14.5 Receptor-Mediated Endocytosis</b>	<b>659</b>		
Cells Take Up Lipids from the Blood in the Form of Large, Well-Defined Lipoprotein Complexes	659		
Receptors for Macromolecular Ligands Contain Sorting Signals That Target Them for Endocytosis	660		

<b>15.3 G Protein–Coupled Receptors: Structure and Mechanism</b>	<b>686</b>	Activated Phospholipase C Generates Two Key Second Messengers Derived from the Membrane Lipid Phosphatidylinositol 4,5-Bisphosphate	709
All G Protein–Coupled Receptors Share the Same Basic Structure	686	The Ca <sup>2+</sup> -Calmodulin Complex Mediates Many Cellular Responses to External Signals	713
Ligand-Activated G Protein–Coupled Receptors Catalyze Exchange of GTP for GDP on the $\alpha$ Subunit of a Heterotrimeric G Protein	689	DAG Activates Protein Kinase C	714
Different G Proteins Are Activated by Different GPCRs and In Turn Regulate Different Effector Proteins	691	Integration of Ca <sup>2+</sup> and cAMP Second Messengers Regulates Glycogenolysis	714
<b>15.4 G Protein–Coupled Receptors That Regulate Ion Channels</b>	<b>693</b>	Signal-Induced Relaxation of Vascular Smooth Muscle Is Mediated by a Ca <sup>2+</sup> -Nitric Oxide-cGMP-Activated Protein Kinase G Pathway	714
Acetylcholine Receptors in the Heart Muscle Activate a G Protein That Opens K <sup>+</sup> Channels	693	<b>16 Signaling Pathways That Control Gene Expression</b> <b>719</b>	
Light Activates Rhodopsin in Rod Cells of the Eye	694	<b>16.1 Receptor Serine Kinases That Activate Smads</b>	<b>722</b>
Activation of Rhodopsin by Light Leads to Closing of cGMP-Gated Cation Channels	695	TGF- $\beta$ Proteins Are Stored in an Inactive Form in the Extracellular Matrix	722
Signal Amplification Makes the Rhodopsin Signal Transduction Pathway Exquisitely Sensitive	696	Three Separate TGF- $\beta$ Receptor Proteins Participate in Binding TGF- $\beta$ and Activating Signal Transduction	722
Rapid Termination of the Rhodopsin Signal Transduction Pathway Is Essential for the Temporal Resolution of Vision	697	Activated TGF- $\beta$ Receptors Phosphorylate Smad Transcription Factors	724
Rod Cells Adapt to Varying Levels of Ambient Light by Intracellular Trafficking of Arrestin and Transducin	698	The Smad3/Smad4 Complex Activates Expression of Different Genes in Different Cell Types	724
<b>15.5 G Protein–Coupled Receptors That Activate or Inhibit Adenylyl Cyclase</b>	<b>699</b>	Negative Feedback Loops Regulate TGF- $\beta$ /Smad Signaling	725
Adenylyl Cyclase Is Stimulated and Inhibited by Different Receptor-Ligand Complexes	699	<b>16.2 Cytokine Receptors and the JAK/STAT Signaling Pathway</b>	<b>726</b>
Structural Studies Established How G <sub>αs</sub> -GTP Binds to and Activates Adenylyl Cyclase	701	Cytokines Influence the Development of Many Cell Types	727
cAMP Activates Protein Kinase A by Releasing Inhibitory Subunits	701	Binding of a Cytokine to Its Receptor Activates One or More Tightly Bound JAK Protein Tyrosine Kinases	728
Glycogen Metabolism Is Regulated by Hormone-Induced Activation of PKA	702	Phosphotyrosine Residues Are Binding Surfaces for Multiple Proteins with Conserved Domains	730
cAMP-Mediated Activation of PKA Produces Diverse Responses in Different Cell Types	703	SH2 Domains in Action: JAK Kinases Activate STAT Transcription Factors	731
Signal Amplification Occurs in the cAMP-PKA Pathway	704	Multiple Mechanisms Down-Regulate Signaling from Cytokine Receptors	731
CREB Links cAMP and PKA to Activation of Gene Transcription	704	<b>16.3 Receptor Tyrosine Kinases</b>	<b>734</b>
Anchoring Proteins Localize Effects of cAMP to Specific Regions of the Cell	705	Binding of Ligand Promotes Dimerization of an RTK and Leads to Activation of Its Intrinsic Tyrosine Kinase	734
Multiple Mechanisms Suppress Signaling from the GPCR/cAMP/PKA Pathway	706	Homo- and Hetero-oligomers of Epidermal Growth Factor Receptors Bind Members of the Epidermal Growth Factor Family	735
<b>15.6 G Protein–Coupled Receptors That Trigger Elevations in Cytosolic and Mitochondrial Calcium</b>	<b>708</b>	Activation of the EGF Receptor Results in the Formation of an Asymmetric Active Kinase Dimer	736
Calcium Concentrations in the Mitochondrial Matrix, ER, and Cytosol Can Be Measured with Targeted Fluorescent Proteins	709	Multiple Mechanisms Down-Regulate Signaling from RTKs	737

<b>16.4 The Ras/MAP Kinase Pathway</b>	<b>739</b>	On Binding Delta, the Notch Receptor Is Cleaved, Releasing a Component Transcription Factor	761
Ras, a GTPase Switch Protein, Operates Downstream of Most RTKs and Cytokine Receptors	739	Matrix Metalloproteases Catalyze Cleavage of Many Signaling Proteins from the Cell Surface	763
Genetic Studies in <i>Drosophila</i> Identified Key Signal-Transducing Proteins in the Ras/MAP Kinase Pathway	739	Inappropriate Cleavage of Amyloid Precursor Protein Can Lead to Alzheimer's Disease	763
Receptor Tyrosine Kinases Are Linked to Ras by Adapter Proteins	741	Regulated Intramembrane Proteolysis of SREBPs Releases a Transcription Factor That Acts to Maintain Phospholipid and Cholesterol Levels	763
Binding of Sos to Inactive Ras Causes a Conformational Change That Triggers an Exchange of GTP for GDP	742	<b>16.8 Integration of Cellular Responses to Multiple Signaling Pathways: Insulin Action</b>	<b>766</b>
Signals Pass from Activated Ras to a Cascade of Protein Kinases Ending with MAP Kinase	742	Insulin and Glucagon Work Together to Maintain a Stable Blood Glucose Level	766
Phosphorylation of MAP Kinase Results in a Conformational Change That Enhances Its Catalytic Activity and Promotes Its Dimerization	744	A Rise in Blood Glucose Triggers Insulin Secretion from the $\beta$ Islet Cells	767
MAP Kinase Regulates the Activity of Many Transcription Factors Controlling Early Response Genes	745	In Fat and Muscle Cells, Insulin Triggers Fusion of Intracellular Vesicles Containing the GLUT4 Glucose Transporter to the Plasma Membrane	767
G Protein–Coupled Receptors Transmit Signals to MAP Kinase in Yeast Mating Pathways	746	Insulin Inhibits Glucose Synthesis and Enhances Storage of Glucose as Glycogen	769
Scaffold Proteins Separate Multiple MAP Kinase Pathways in Eukaryotic Cells	746	Multiple Signal Transduction Pathways Interact to Regulate Adipocyte Differentiation Through PPAR $\gamma$ , the Master Transcriptional Regulator	770
<b>16.5 Phosphoinositide Signaling Pathways</b>	<b>748</b>	Inflammatory Hormones Cause Derangement of Adipose Cell Function in Obesity	770
Phospholipase C $\gamma$ Is Activated by Some RTKs and Cytokine Receptors	749	<b>17 Cell Organization and Movement I: Microfilaments</b>	<b>775</b>
Recruitment of PI-3 Kinase to Activated Receptors Leads to Synthesis of Three Phosphorylated Phosphatidylinositols	749	<b>17.1 Microfilaments and Actin Structures</b>	<b>778</b>
Accumulation of PI 3-Phosphates in the Plasma Membrane Leads to Activation of Several Kinases	750	Actin Is Ancient, Abundant, and Highly Conserved	778
Activated Protein Kinase B Induces Many Cellular Responses	750	G-Actin Monomers Assemble into Long, Helical F-Actin Polymers	779
The PI-3 Kinase Pathway Is Negatively Regulated by PTEN Phosphatase	751	F-Actin Has Structural and Functional Polarity	780
<b>16.6 Signaling Pathways Controlled by Ubiquitylation and Protein Degradation: Wnt, Hedgehog, and NF-<math>\kappa</math>B</b>	<b>751</b>	<b>17.2 Dynamics of Actin Filaments</b>	<b>781</b>
Wnt Signaling Triggers Release of a Transcription Factor from a Cytosolic Protein Complex	752	Actin Polymerization In Vitro Proceeds in Three Steps	781
Concentration Gradients of Wnt Protein Are Essential for Many Steps in Development	753	Actin Filaments Grow Faster at (+) Ends Than at (–) Ends	782
Hedgehog Signaling Relieves Repression of Target Genes	754	Actin Filament Treadmilling Is Accelerated by Profilin and Cofilin	784
Hedgehog Signaling in Vertebrates Requires Primary Cilia	757	Thymosin- $\beta_4$ Provides a Reservoir of Actin for Polymerization	785
Degradation of an Inhibitor Protein Activates the NF- $\kappa$ B Transcription Factor	757	Capping Proteins Block Assembly and Disassembly at Actin Filament Ends	785
Polyubiquitin Chains Serve as Scaffolds Linking Receptors to Downstream Proteins in the NF- $\kappa$ B Pathway	760	<b>17.3 Mechanisms of Actin Filament Assembly</b>	<b>786</b>
<b>16.7 Signaling Pathways Controlled by Protein Cleavage: Notch/Delta, SREBP, and Alzheimer's Disease</b>	<b>761</b>	Formins Assemble Unbranched Filaments	786

The Arp2/3 Complex Nucleates Branched Filament Assembly	787
Intracellular Movements Can Be Powered by Actin Polymerization	789
Microfilaments Function in Endocytosis	790
Toxins That Perturb the Pool of Actin Monomers Are Useful for Studying Actin Dynamics	791

## **17.4 Organization of Actin-Based Cellular Structures** 793

Cross-Linking Proteins Organize Actin Filaments into Bundles or Networks	793
Adapter Proteins Link Actin Filaments to Membranes	793

## **17.5 Myosins: Actin-Based Motor Proteins** 796

Myosins Have Head, Neck, and Tail Domains with Distinct Functions	797
Myosins Make Up a Large Family of Mechanochemical Motor Proteins	798
Conformational Changes in the Myosin Head Couple ATP Hydrolysis to Movement	800
Myosin Heads Take Discrete Steps Along Actin Filaments	802

## **17.6 Myosin-Powered Movements** 803

Myosin Thick Filaments and Actin Thin Filaments in Skeletal Muscle Slide Past Each Other During Contraction	803
Skeletal Muscle Is Structured by Stabilizing and Scaffolding Proteins	805
Contraction of Skeletal Muscle Is Regulated by $\text{Ca}^{2+}$ and Actin-Binding Proteins	805
Actin and Myosin II Form Contractile Bundles in Nonmuscle Cells	807
Myosin-Dependent Mechanisms Regulate Contraction in Smooth Muscle and Nonmuscle Cells	808
Myosin V-Bound Vesicles Are Carried Along Actin Filaments	808

## **17.7 Cell Migration: Mechanism, Signaling, and Chemotaxis** 811

Cell Migration Coordinates Force Generation with Cell Adhesion and Membrane Recycling	811
The Small GTP-Binding Proteins Cdc42, Rac, and Rho Control Actin Organization	813
Cell Migration Involves the Coordinate Regulation of Cdc42, Rac, and Rho	815
Migrating Cells Are Steered by Chemotactic Molecules	816

# **18 Cell Organization and Movement II: Microtubules and Intermediate Filaments** 821

## **18.1 Microtubule Structure and Organization** 822

Microtubule Walls Are Polarized Structures Built from $\alpha\beta$ -Tubulin Dimers	822
Microtubules Are Assembled from MTOCs to Generate Diverse Configurations	824

## **18.2 Microtubule Dynamics** 827

Individual Microtubules Exhibit Dynamic Instability	827
Localized Assembly and “Search and Capture” Help Organize Microtubules	829
Drugs Affecting Tubulin Polymerization Are Useful Experimentally and in Treatment of Diseases	829

## **18.3 Regulation of Microtubule Structure and Dynamics** 830

Microtubules Are Stabilized by Side-Binding Proteins	830
+TIPs Regulate the Properties and Functions of the Microtubule (+) End	831
Other End-Binding Proteins Regulate Microtubule Disassembly	832

## **18.4 Kinesins and Dyneins: Microtubule-Based Motor Proteins** 833

Organelles in Axons Are Transported Along Microtubules in Both Directions	833
Kinesin-1 Powers Anterograde Transport of Vesicles Down Axons Toward the (+) Ends of Microtubules	835
The Kinesins Form a Large Protein Superfamily with Diverse Functions	835
Kinesin-1 Is a Highly Processive Motor	836
Dynein Motors Transport Organelles Toward the (–) Ends of Microtubules	838
Kinesins and Dyneins Cooperate in the Transport of Organelles Throughout the Cell	841
Tubulin Modifications Distinguish Different Classes of Microtubules and Their Accessibility to Motors	842

## **18.5 Cilia and Flagella: Microtubule-Based Surface Structures** 844

Eukaryotic Cilia and Flagella Contain Long Doublet Microtubules Bridged by Dynein Motors	844
--	-----

Ciliary and Flagellar Beating Are Produced by Controlled Sliding of Outer Doublet Microtubules	844	Advancement of Neural Growth Cones Is Coordinated by Microfilaments and Microtubules	868
Intraflagellar Transport Moves Material Up and Down Cilia and Flagella	845		
Primary Cilia Are Sensory Organelles on Interphase Cells	847		
Defects in Primary Cilia Underlie Many Diseases	848		
<b>18.6 Mitosis</b>	<b>849</b>	<b>19 The Eukaryotic Cell Cycle</b>	<b>873</b>
Centrosomes Duplicate Early in the Cell Cycle in Preparation for Mitosis	849	<b>19.1 Overview of the Cell Cycle and Its Control</b>	<b>875</b>
Mitosis Can Be Divided into Six Stages	850	The Cell Cycle Is an Ordered Series of Events Leading to Cell Replication	875
The Mitotic Spindle Contains Three Classes of Microtubules	851	Cyclin-Dependent Kinases Control the Eukaryotic Cell Cycle	876
Microtubule Dynamics Increase Dramatically in Mitosis	852	Several Key Principles Govern the Cell Cycle	876
Mitotic Asters Are Pushed Apart by Kinesin-5 and Oriented by Dynein	853	<b>19.2 Model Organisms and Methods of Studying the Cell Cycle</b>	<b>877</b>
Chromosomes Are Captured and Oriented During Prometaphase	853	Budding and Fission Yeasts Are Powerful Systems for Genetic Analysis of the Cell Cycle	877
Duplicated Chromosomes Are Aligned by Motors and Microtubule Dynamics	854	Frog Oocytes and Early Embryos Facilitate Biochemical Characterization of the Cell Cycle Machinery	878
The Chromosomal Passenger Complex Regulates Microtubule Attachment at Kinetochores	855	Fruit Flies Reveal the Interplay Between Development and the Cell Cycle	879
Anaphase A Moves Chromosomes to Poles by Microtubule Shortening	857	The Study of Tissue Culture Cells Uncovers Cell Cycle Regulation in Mammals	880
Anaphase B Separates Poles by the Combined Action of Kinesins and Dynein	858	Researchers Use Multiple Tools to Study the Cell Cycle	881
Additional Mechanisms Contribute to Spindle Formation	858	<b>19.3 Regulation of CDK Activity</b>	<b>882</b>
Cytokinesis Splits the Duplicated Cell in Two	859	Cyclin-Dependent Kinases Are Small Protein Kinases That Require a Regulatory Cyclin Subunit for Their Activity	883
Plant Cells Reorganize Their Microtubules and Build a New Cell Wall in Mitosis	860	Cyclins Determine the Activity of CDKs	884
<b>18.7 Intermediate Filaments</b>	<b>861</b>	Cyclin Levels Are Primarily Regulated by Protein Degradation	885
Intermediate Filaments Are Assembled from Subunit Dimers	861	CDKs Are Regulated by Activating and Inhibitory Phosphorylation	886
Intermediate Filaments Are Dynamic	861	CDK Inhibitors Control Cyclin-CDK Activity	886
Cytoplasmic Intermediate Filament Proteins Are Expressed in a Tissue-Specific Manner	862	Genetically Engineered CDKs Led to the Discovery of CDK Functions	887
Lamins Line the Inner Nuclear Envelope To Provide Organization and Rigidity to the Nucleus	865	<b>19.4 Commitment to the Cell Cycle and DNA Replication</b>	<b>887</b>
Lamins Are Reversibly Disassembled by Phosphorylation During Mitosis	866	Cells Are Irreversibly Committed to Division at a Cell Cycle Point Called START or the Restriction Point	888
<b>18.8 Coordination and Cooperation Between Cytoskeletal Elements</b>	<b>867</b>	The E2F Transcription Factor and Its Regulator Rb Control the G <sub>1</sub> -S Phase Transition in Metazoans	889
Intermediate Filament-Associated Proteins Contribute to Cellular Organization	867	Extracellular Signals Govern Cell Cycle Entry	889
Microfilaments and Microtubules Cooperate to Transport Melanosomes	867	Degradation of an S Phase CDK Inhibitor Triggers DNA Replication	890
Cdc42 Coordinates Microtubules and Microfilaments During Cell Migration	867		

Replication at Each Origin Is Initiated Once and Only Once During the Cell Cycle	892
Duplicated DNA Strands Become Linked During Replication	893

### **19.5 Entry into Mitosis** 895

Precipitous Activation of Mitotic CDKs Initiates Mitosis	896
Mitotic CDKs Promote Nuclear Envelope Breakdown	897
Mitotic CDKs Promote Mitotic Spindle Formation	897
Chromosome Condensation Facilitates Chromosome Segregation	899

### **19.6 Completion of Mitosis: Chromosome Segregation and Exit from Mitosis** 901

Separase-Mediated Cleavage of Cohesins Initiates Chromosome Segregation	901
APC/C Activates Separase Through Securin Ubiquitinylation	901
Mitotic CDK Inactivation Triggers Exit from Mitosis	902
Cytokinesis Creates Two Daughter Cells	903

### **19.7 Surveillance Mechanisms in Cell Cycle Regulation** 904

Checkpoint Pathways Establish Dependencies and Prevent Errors in the Cell Cycle	905
The Growth Checkpoint Pathway Ensures That Cells Enter the Cell Cycle Only After Sufficient Macromolecule Biosynthesis	905
The DNA Damage Response System Halts Cell Cycle Progression When DNA Is Compromised	905
The Spindle Assembly Checkpoint Pathway Prevents Chromosome Segregation Until Chromosomes Are Accurately Attached to the Mitotic Spindle	908
The Spindle Position Checkpoint Pathway Ensures That the Nucleus Is Accurately Partitioned Between Two Daughter Cells	909

### **19.8 Meiosis: A Special Type of Cell Division** 911

Extracellular and Intracellular Cues Regulate Germ Cell Formation	912
Several Key Features Distinguish Meiosis from Mitosis	912
Recombination and a Meiosis-Specific Cohesin Subunit Are Necessary for the Specialized Chromosome Segregation in Meiosis I	915
Co-orienting Sister Kinetochores Is Critical for Meiosis I Chromosome Segregation	917
DNA Replication Is Inhibited Between the Two Meiotic Divisions	917

## **Part IV Cell Growth and Differentiation**

### **20 Integrating Cells into Tissues** 921

#### **20.1 Cell-Cell and Cell–Extracellular Matrix Adhesion: An Overview** 923

Cell-Adhesion Molecules Bind to One Another and to Intracellular Proteins	923
The Extracellular Matrix Participates in Adhesion, Signaling, and Other Functions	925
The Evolution of Multifaceted Adhesion Molecules Made Possible the Evolution of Diverse Animal Tissues	928
Cell-Adhesion Molecules Mediate Mechanotransduction	929

#### **20.2 Cell-Cell and Cell–Extracellular Junctions and Their Adhesion Molecules** 931

Epithelial Cells Have Distinct Apical, Lateral, and Basal Surfaces	931
Three Types of Junctions Mediate Many Cell-Cell and Cell-ECM Interactions	932
Cadherins Mediate Cell-Cell Adhesions in Adherens Junctions and Desmosomes	933
Integrins Mediate Cell-ECM Adhesions, Including Those in Epithelial-Cell Hemidesmosomes	938
Tight Junctions Seal Off Body Cavities and Restrict Diffusion of Membrane Components	939
Gap Junctions Composed of Connexins Allow Small Molecules to Pass Directly Between the Cytosols of Adjacent Cells	942

#### **20.3 The Extracellular Matrix I: The Basal Lamina** 945

The Basal Lamina Provides a Foundation for Assembly of Cells into Tissues	945
Laminin, a Multi-adhesive Matrix Protein, Helps Cross-Link Components of the Basal Lamina	947
Sheet-Forming Type IV Collagen Is a Major Structural Component of the Basal Lamina	948
Perlecan, a Proteoglycan, Cross-Links Components of the Basal Lamina and Cell-Surface Receptors	950

#### **20.4 The Extracellular Matrix II: Connective Tissue** 951

Fibrillar Collagens Are the Major Fibrous Proteins in the ECM of Connective Tissues	951
Fibrillar Collagen Is Secreted and Assembled into Fibrils Outside the Cell	951
Type I and II Collagens Associate with Nonfibrillar Collagens to Form Diverse Structures	952

Proteoglycans and Their Constituent GAGs Play Diverse Roles in the ECM	953	Somatic Cells Can Generate iPS Cells	983
Hyaluronan Resists Compression, Facilitates Cell Migration, and Gives Cartilage Its Gel-Like Properties	956	ES and iPS Cells Can Generate Functional Differentiated Human Cells	986
Fibronectins Connect Cells and ECM, Influencing Cell Shape, Differentiation, and Movement	956	<b>21.3 Stem Cells and Niches in Multicellular Organisms</b>	<b>987</b>
Elastic Fibers Permit Many Tissues to Undergo Repeated Stretching and Recoiling	959	Adult Planaria Contain Pluripotent Stem Cells	988
Metalloproteases Remodel and Degrade the Extracellular Matrix	960	Multipotent Somatic Stem Cells Give Rise to Both Stem Cells and Differentiating Cells	988
<b>20.5 Adhesive Interactions in Motile and Nonmotile Cells</b>	<b>961</b>	Stem Cells for Different Tissues Occupy Sustaining Niches	988
Integrins Mediate Adhesion and Relay Signals Between Cells and Their Three-Dimensional Environment	961	Germ-Line Stem Cells Produce Sperm or Oocytes	990
Regulation of Integrin-Mediated Adhesion and Signaling Controls Cell Movement	962	Intestinal Stem Cells Continuously Generate All the Cells of the Intestinal Epithelium	991
Connections Between the ECM and Cytoskeleton Are Defective in Muscular Dystrophy	964	Hematopoietic Stem Cells Form All Blood Cells	994
IgCAMs Mediate Cell-Cell Adhesion in Neural and Other Tissues	965	Rare Types of Cells Constitute the Niche for Hematopoietic Stem Cells	996
Leukocyte Movement into Tissues Is Orchestrated by a Precisely Timed Sequence of Adhesive Interactions	966	Meristems Are Niches for Stem Cells in Plants	996
<b>20.6 Plant Tissues</b>	<b>968</b>	A Negative Feedback Loop Maintains the Size of the Shoot Apical Stem-Cell Population	998
The Plant Cell Wall Is a Laminate of Cellulose Fibrils in a Matrix of Glycoproteins	968	The Root Meristem Resembles the Shoot Meristem in Structure and Function	999
Loosening of the Cell Wall Permits Plant Cell Growth	969	<b>21.4 Mechanisms of Cell Polarity and Asymmetric Cell Division</b>	<b>1000</b>
Plasmodesmata Directly Connect the Cytosols of Adjacent Cells	969	The Intrinsic Polarity Program Depends on a Positive Feedback Loop Involving Cdc42	1000
Tunneling Nanotubes Resemble Plasmodesmata and Transfer Molecules and Organelles Between Animal Cells	970	Cell Polarization Before Cell Division Follows a Common Hierarchy of Steps	1002
Only a Few Adhesion Molecules Have Been Identified in Plants	971	Polarized Membrane Traffic Allows Yeast to Grow Asymmetrically During Mating	1003
		The Par Proteins Direct Cell Asymmetry in the Nematode Embryo	1003
		The Par Proteins and Other Polarity Complexes Are Involved in Epithelial-Cell Polarity	1007
		The Planar Cell Polarity Pathway Orients Cells Within an Epithelium	1008
		The Par Proteins Are Involved in Asymmetric Division of Stem Cells	1008
		<b>21.5 Cell Death and Its Regulation</b>	<b>1011</b>
		Most Programmed Cell Death Occurs Through Apoptosis	1012
		Evolutionarily Conserved Proteins Participate in the Apoptotic Pathway	1013
		Caspases Amplify the Initial Apoptotic Signal and Destroy Key Cellular Proteins	1015
		Neurotrophins Promote Survival of Neurons	1015
		Mitochondria Play a Central Role in Regulation of Apoptosis in Vertebrate Cells	1017
		The Pro-apoptotic Proteins Bax and Bak Form Pores and Holes in the Outer Mitochondrial Membrane	1018
<b>21 Stem Cells, Cell Asymmetry, and Cell Death</b>	<b>975</b>		
<b>21.1 Early Mammalian Development</b>	<b>977</b>		
Fertilization Unifies the Genome	977		
Cleavage of the Mammalian Embryo Leads to the First Differentiation Events	979		
<b>21.2 Embryonic Stem Cells and Induced Pluripotent Stem Cells</b>	<b>980</b>		
The Inner Cell Mass Is the Source of ES Cells	980		
Multiple Factors Control the Pluripotency of ES Cells	981		
Animal Cloning Shows That Differentiation Can Be Reversed	983		

Release of Cytochrome <i>c</i> and SMAC/DIABLO Proteins from Mitochondria Leads to Formation of the Apoptosome and Caspase Activation	1018
Trophic Factors Induce Inactivation of Bad, a Pro-apoptotic BH3-Only Protein	1018
Vertebrate Apoptosis Is Regulated by BH3-Only Pro-apoptotic Proteins That Are Activated by Environmental Stresses	1020
Two Types of Cell Murder Are Triggered by Tumor Necrosis Factor, Fas Ligand, and Related Death Signals	1021

## 22 Cells of the Nervous System 1025

### 22.1 Neurons and Glia: Building Blocks of the Nervous System 1026

Information Flows Through Neurons from Dendrites to Axons	1027
Information Moves Along Axons as Pulses of Ion Flow Called Action Potentials	1027
Information Flows Between Neurons via Synapses	1028
The Nervous System Uses Signaling Circuits Composed of Multiple Neurons	1028
Glial Cells Form Myelin Sheaths and Support Neurons	1029
Neural Stem Cells Form Nerve and Glial Cells in the Central Nervous System	1031

### 22.2 Voltage-Gated Ion Channels and the Propagation of Action Potentials 1034

The Magnitude of the Action Potential Is Close to $E_{Na}$ and Is Caused by $Na^+$ Influx Through Open $Na^+$ Channels	1034
Sequential Opening and Closing of Voltage-Gated $Na^+$ and $K^+$ Channels Generate Action Potentials	1035
Action Potentials Are Propagated Unidirectionally Without Diminution	1037
Nerve Cells Can Conduct Many Action Potentials in the Absence of ATP	1039
All Voltage-Gated Ion Channels Have Similar Structures	1039
Voltage-Sensing S4 $\alpha$ Helices Move in Response to Membrane Depolarization	1039
Movement of the Channel-Inactivating Segment into the Open Pore Blocks Ion Flow	1042
Myelination Increases the Velocity of Impulse Conduction	1043
Action Potentials “Jump” from Node to Node in Myelinated Axons	1043
Two Types of Glia Produce Myelin Sheaths	1044
Light-Activated Ion Channels and Optogenetics	1046

### 22.3 Communication at Synapses 1048

Formation of Synapses Requires Assembly of Presynaptic and Postsynaptic Structures	1048
Neurotransmitters Are Transported into Synaptic Vesicles by $H^+$ -Linked Antiport Proteins	1052

Three Pools of Synaptic Vesicles Loaded with Neurotransmitter Are Present in the Presynaptic Terminal	1054
Influx of $Ca^{2+}$ Triggers Release of Neurotransmitters	1054
A Calcium-Binding Protein Regulates Fusion of Synaptic Vesicles with the Plasma Membrane	1055
Fly Mutants Lacking Dynamin Cannot Recycle Synaptic Vesicles	1056
Signaling at Synapses Is Terminated by Degradation or Reuptake of Neurotransmitters	1057
Opening of Acetylcholine-Gated Cation Channels Leads to Muscle Contraction	1057
All Five Subunits in the Nicotinic Acetylcholine Receptor Contribute to the Ion Channel	1058
Nerve Cells Integrate Many Inputs to Make an All-or-None Decision to Generate an Action Potential	1059
Gap Junctions Allow Direct Communication Between Neurons and Between Glia	1060

### 22.4 Sensing the Environment: Touch, Pain, Taste, and Smell 1061

Mechanoreceptors Are Gated Cation Channels	1061
Pain Receptors Are Also Gated Cation Channels	1062
Five Primary Tastes Are Sensed by Subsets of Cells in Each Taste Bud	1064
A Plethora of Receptors Detect Odors	1066
Each Olfactory Receptor Neuron Expresses a Single Type of Odorant Receptor	1068

### 22.5 Forming and Storing Memories 1070

Memories Are Formed by Changing the Number or Strength of Synapses Between Neurons	1070
The Hippocampus Is Required for Memory Formation	1071
Multiple Molecular Mechanisms Contribute to Synaptic Plasticity	1072
Formation of Long-Term Memories Requires Gene Expression	1074

## 23 Immunology 1079

### 23.1 Overview of Host Defenses 1081

Pathogens Enter the Body Through Different Routes and Replicate at Different Sites	1081
Leukocytes Circulate Throughout the Body and Take Up Residence in Tissues and Lymph Nodes	1082
Mechanical and Chemical Boundaries Form a First Layer of Defense Against Pathogens	1083
Innate Immunity Provides a Second Line of Defense	1084
Inflammation Is a Complex Response to Injury That Encompasses Both Innate and Adaptive Immunity	1086
Adaptive Immunity, the Third Line of Defense, Exhibits Specificity	1088



### **23.2 Immunoglobulins: Structure and Function** 1089

Immunoglobulins Have a Conserved Structure Consisting of Heavy and Light Chains	1089
Multiple Immunoglobulin Isotypes Exist, Each with Different Functions	1090
Each Naive B Cell Produces a Unique Immunoglobulin	1091
Immunoglobulin Domains Have a Characteristic Fold Composed of Two $\beta$ Sheets Stabilized by a Disulfide Bond	1093
An Immunoglobulin's Constant Region Determines Its Functional Properties	1094

### **23.3 Generation of Antibody Diversity and B-Cell Development** 1095

A Functional Light-Chain Gene Requires Assembly of V and J Gene Segments	1096
Rearrangement of the Heavy-Chain Locus Involves V, D, and J Gene Segments	1099
Somatic Hypermutation Allows the Generation and Selection of Antibodies with Improved Affinities	1099
B-Cell Development Requires Input from a Pre-B-Cell Receptor	1100
During an Adaptive Response, B Cells Switch from Making Membrane-Bound Ig to Making Secreted Ig	1101
B Cells Can Switch the Isotype of Immunoglobulin They Make	1102

### **23.4 The MHC and Antigen Presentation** 1104

The MHC Determines the Ability of Two Unrelated Individuals of the Same Species to Accept or Reject Grafts	1104
The Killing Activity of Cytotoxic T Cells Is Antigen Specific and MHC Restricted	1105
T Cells with Different Functional Properties Are Guided by Two Distinct Classes of MHC Molecules	1105
MHC Molecules Bind Peptide Antigens and Interact with the T-Cell Receptor	1107
Antigen Presentation Is the Process by Which Protein Fragments Are Complexed with MHC Products and Posted to the Cell Surface	1109
The Class I MHC Pathway Presents Cytosolic Antigens	1110
The Class II MHC Pathway Presents Antigens Delivered to the Endocytic Pathway	1112

### **23.5 T Cells, T-Cell Receptors, and T-Cell Development** 1115

The Structure of the T-Cell Receptor Resembles the F(ab) Portion of an Immunoglobulin	1115
TCR Genes Are Rearranged in a Manner Similar to Immunoglobulin Genes	1116

Many of the Variable Residues of TCRs Are Encoded in the Junctions Between V, D, and J Gene Segments	1118
Signaling via Antigen-Specific Receptors Triggers Proliferation and Differentiation of T and B Cells	1118
T Cells Capable of Recognizing MHC Molecules Develop Through a Process of Positive and Negative Selection	1120
T Cells Commit to the CD4 or CD8 Lineage in the Thymus	1121
T Cells Require Two Types of Signals for Full Activation	1122
Cytotoxic T Cells Carry the CD8 Co-receptor and Are Specialized for Killing	1122
T Cells Produce an Array of Cytokines That Provide Signals to Other Immune-System Cells	1123
Helper T Cells Are Divided into Distinct Subsets Based on Their Cytokine Production and Expression of Surface Markers	1124
Leukocytes Move in Response to Chemotactic Cues Provided by Chemokines	1124

### **23.6 Collaboration of Immune-System Cells in the Adaptive Response** 1125

Toll-Like Receptors Perceive a Variety of Pathogen-Derived Macromolecular Patterns	1125
Engagement of Toll-Like Receptors Leads to Activation of Antigen-Presenting Cells	1127
Production of High-Affinity Antibodies Requires Collaboration Between B and T cells	1128
Vaccines Elicit Protective Immunity Against a Variety of Pathogens	1130
The Immune System Defends Against Cancer	1131

## **24 Cancer** 1135

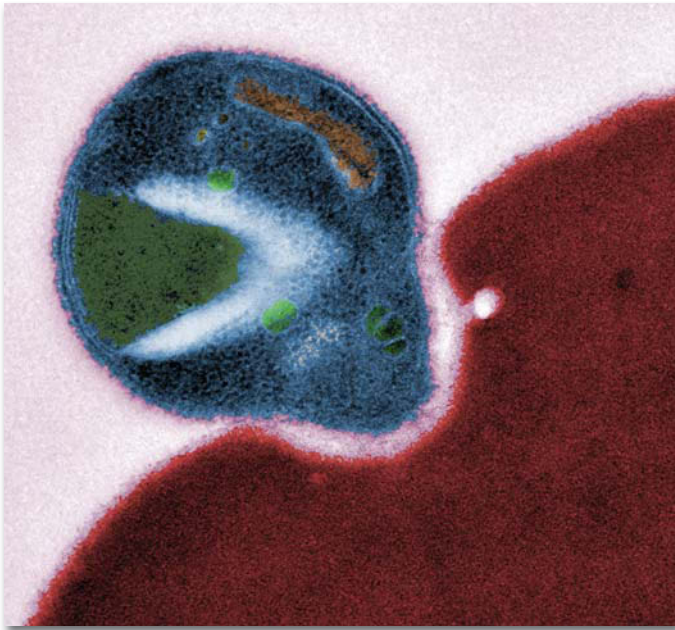
### **24.1 How Tumor Cells Differ from Normal Cells** 1136

The Genetic Makeup of Most Cancer Cells Is Dramatically Altered	1137
Cellular Housekeeping Functions Are Fundamentally Altered in Cancer Cells	1137
Uncontrolled Proliferation Is a Universal Trait of Cancer	1139
Cancer Cells Escape the Confines of Tissues	1140
Tumors Are Heterogeneous Organs That Are Sculpted by Their Environment	1140
Tumor Growth Requires Formation of New Blood Vessels	1141
Invasion and Metastasis Are Late Stages of Tumorigenesis	1141

### **24.2 The Origins and Development of Cancer** 1143

Carcinogens Induce Cancer by Damaging DNA	1143
Some Carcinogens Have Been Linked to Specific Cancers	1144

The Multi-hit Model Can Explain the Progress of Cancer	1145	Many Oncogenes Encode Constitutively Active Signal-Transducing Proteins	1160
Successive Oncogenic Mutations Can Be Traced in Colon Cancers	1146	Inappropriate Production of Nuclear Transcription Factors Can Induce Transformation	1160
Cancer Development Can Be Studied in Cultured Cells and in Animal Models	1146	Aberrations in Signaling Pathways That Control Development Are Associated with Many Cancers	1161
<b>24.3 The Genetic Basis of Cancer</b>	<b>1149</b>	Genes That Regulate Apoptosis Can Function as Proto-oncogenes or Tumor-Suppressor Genes	1163
Gain-of-Function Mutations Convert Proto-oncogenes into Oncogenes	1149	<b>24.5 Deregulation of the Cell Cycle and Genome Maintenance Pathways in Cancer</b>	<b>1163</b>
Cancer-Causing Viruses Contain Oncogenes or Activate Cellular Proto-oncogenes	1152	Mutations That Promote Unregulated Passage from G <sub>1</sub> to S Phase Are Oncogenic	1164
Loss-of-Function Mutations in Tumor-Suppressor Genes Are Oncogenic	1152	Loss of p53 Abolishes the DNA Damage Checkpoint	1165
Inherited Mutations in Tumor-Suppressor Genes Increase Cancer Risk	1153	Loss of DNA-Repair Systems Can Lead to Cancer	1166
Epigenetic Changes Can Contribute to Tumorigenesis	1155	<b>GLOSSARY</b>	<b>G-1</b>
Micro-RNAs Can Promote and Inhibit Tumorigenesis	1155	<b>INDEX</b>	<b>I-1</b>
Researchers Are Identifying Drivers of Tumorigenesis	1156		
Molecular Cell Biology Is Changing How Cancer Is Diagnosed and Treated	1157		
<b>24.4 Misregulation of Cell Growth and Death Pathways in Cancer</b>	<b>1159</b>		
Oncogenic Receptors Can Promote Proliferation in the Absence of External Growth Factors	1159		



Two cells in mortal combat: a malaria parasite invading a human red blood cell. [Courtesy Dr. Stuart Ralph, University of Melbourne.]

*Nothing in biology makes sense except in the light of evolution.*

—Theodosius Dobzhansky, 1973, essay in *American Biology Teacher* 35:125–129

**Biology** is a science fundamentally different from physics or chemistry, which deal with unchanging properties of matter that can be described by mathematical equations. Biological systems, of course, follow the rules of chemistry and physics, but biology is a historical science, as the forms and structures of the living world today are the results of billions of years of evolution. Through evolution, all organisms are related in a family tree extending from primitive single-celled organisms that lived in the distant past to the diverse plants, animals, and microorganisms of the present era (Figure 1-1, Table 1-1). The great insight of Charles Darwin (Figure 1-2) was the principle of natural selection: organisms vary randomly and compete within their environment for resources. Only those that survive and reproduce are able to pass down their genetic traits.

# Molecules, Cells, and Model Organisms

At first glance, the biological universe does appear amazingly diverse—from tiny ferns to tall fir trees, from single-celled bacteria and protozoans visible only under a microscope to multicellular animals of all kinds. Indeed, cells come in an astonishing variety of sizes and shapes (Figure 1-3). Some move rapidly and have fast-changing structures, as we can see in movies of amoebae and rotifers. Others are largely stationary and structurally stable. Oxygen kills some cells but is an absolute requirement for others. Most cells in multicellular organisms are intimately involved with other cells. Although some unicellular organisms live in isolation (Figure 1-3a), others form colonies or live in close association with other types of organisms (Figure 1-3b, d), such as the bacteria that help plants to extract nitrogen from the air or the bacteria that live in our intestines and help us digest food.

Yet the bewildering array of outward biological forms overlies a powerful uniformity: thanks to our common ancestry, all biological systems are composed of cells containing the same types of chemical molecules and employing similar principles of organization at the cellular level. Although the

## OUTLINE

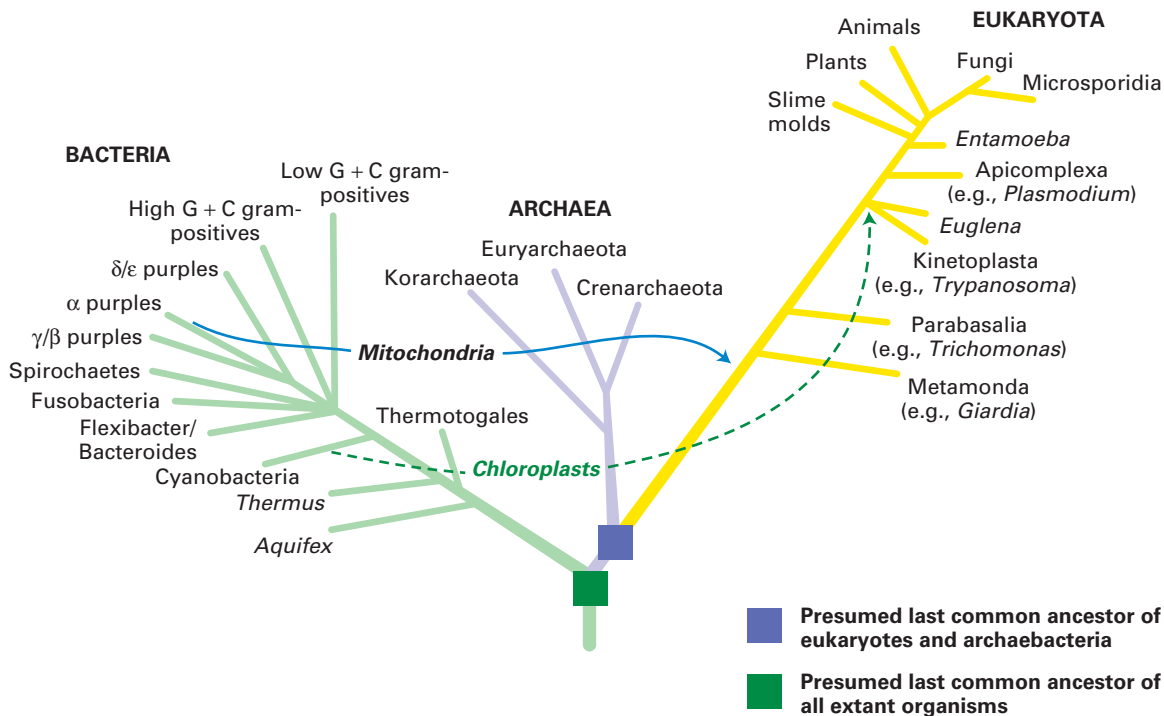
### 1.1 The Molecules of Life

### 1.2 Prokaryotic Cell Structure and Function

### 1.3 Eukaryotic Cell Structure and Function

### 1.4 Unicellular Eukaryotic Model Organisms

### 1.5 Metazoan Structure, Differentiation, and Model Organisms



**FIGURE 1-1 All living organisms descended from a common ancestral cell.** All organisms, from simple bacteria to complex mammals, probably evolved from a common single-celled ancestor. This family tree depicts the evolutionary relationships among the three major lineages of organisms. The structure of the tree was initially ascertained from morphological criteria: creatures that look alike were put close together. More recently, the sequences of DNA and proteins

found in organisms have provided more information-rich criteria for assigning relationships. The greater the similarities in these macromolecular sequences, the more closely related organisms are thought to be. The trees based on morphological comparisons and the fossil record generally agree well with those based on molecular data. [Data from J. R. Brown, 2005, "Universal tree of life," in *Encyclopedia of Life Sciences*, Wiley InterScience (online).]

basic kinds of biological molecules have been conserved during the billions of years of evolution, the patterns in which they are assembled to form functioning cells and organisms have undergone considerable change.

We now know that **genes**, which chemically are composed of **deoxyribonucleic acid (DNA)**, ultimately define biological structure and maintain the integration of cellular function. Many genes encode **proteins**, the primary molecules that make up cell structures and carry out cellular activities. Alterations in the structure and organization of genes, or **mutations**, provide the random variation that can alter biological structure and function. While the vast majority of random mutations have no observable effect on a gene's or protein's function, many are deleterious, and only a few confer an evolutionary advantage on the organism. In all organisms, mutations in DNA are constantly occurring, allowing over time the small alterations in cellular structures and functions that may prove to be advantageous. Entirely new cellular structures are rarely created; more often, existing cellular structures undergo changes that better adapt the organism to new circumstances. Slight changes in a protein can cause important changes in its function or abolish its function entirely.

For instance, in a particular organism, one gene may randomly become duplicated, after which one copy of the

gene and its encoded protein retain their original function while, over time, the second copy of the gene mutates such that its protein takes on a slightly different or even a totally new function. During the evolution of some organisms, the entire genome became duplicated, allowing the second copies of many genes to undergo mutations and acquire new functions. The cellular organization of organisms plays a fundamental role in this process because it allows these changes to come about by small alterations in previously evolved cells, giving them new abilities. The result is that closely related organisms have very similar genes and proteins as well as similar cellular and tissue organizations.

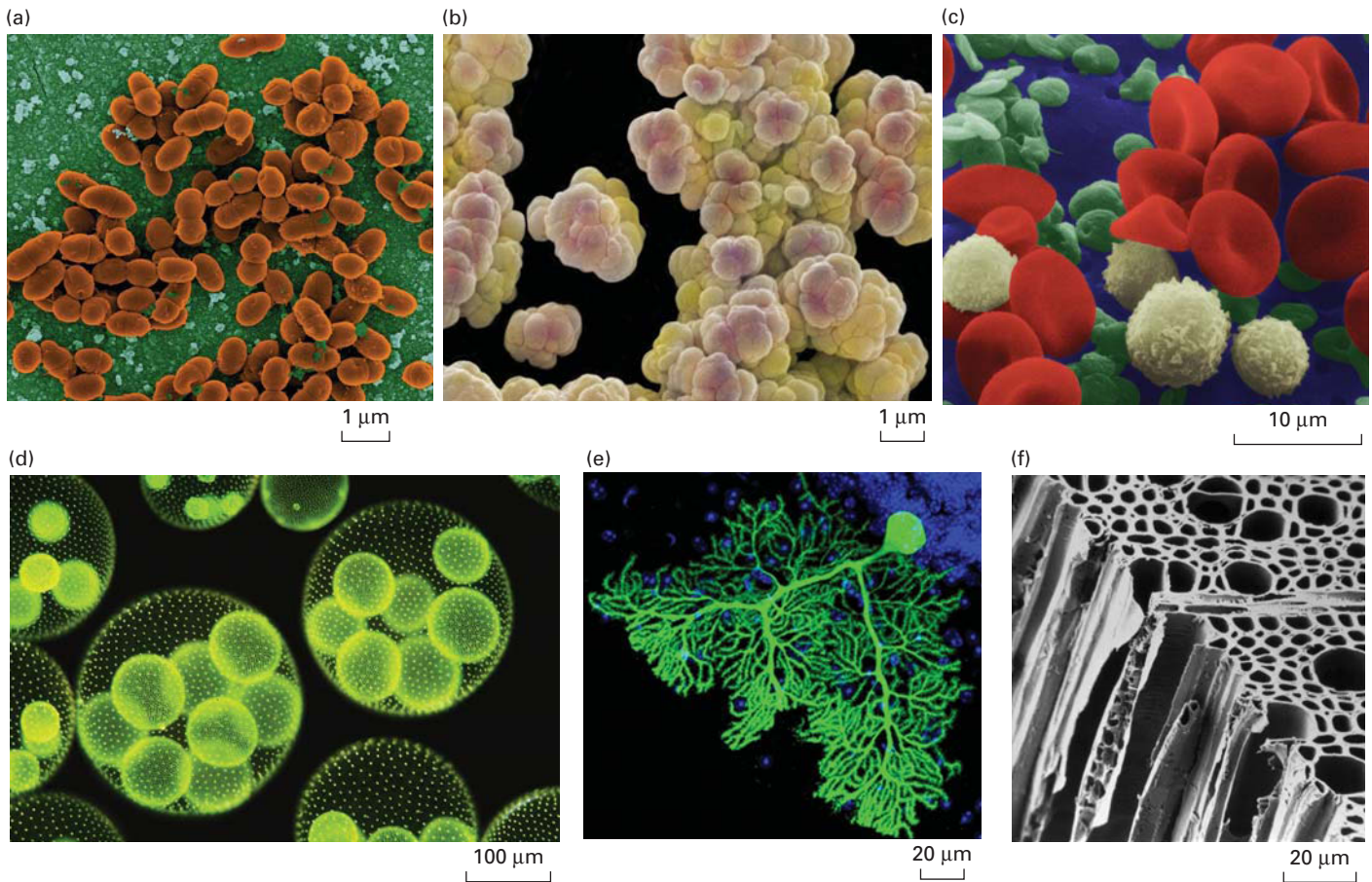
Multicellular organisms, including the human body, consist of such closely interrelated elements that no single element can be fully appreciated in isolation from the others. Organisms contain organs, organs are composed of tissues, tissues consist of cells, and cells are formed from molecules (Figure 1-4). The unity of living systems is coordinated by many levels of interrelationship: molecules carry messages from organ to organ and cell to cell, and tissues are delineated and integrated with other tissues by molecules secreted by cells. Generally all the levels into which we fragment biological systems interconnect.

**TABLE 1-1** Timeline for Evolution of Life on Earth, as Determined from the Fossil Record

4600 million years ago	The planet Earth forms from material revolving around the young Sun.
~3900–2500 million years ago	Cells resembling prokaryotes appear. These first organisms are chemoautotrophs: they use carbon dioxide as a carbon source and oxidize inorganic materials to extract energy.
3500 million years ago	Lifetime of the last universal ancestor; the split between Eubacteria and Archaea occurs.
3000 million years ago	Photosynthesizing cyanobacteria evolve; they use water as a reducing agent, thereby producing oxygen as a waste product.
1850 million years ago	Unicellular eukaryotes appear.
1200 million years ago	Simple multicellular organisms evolve, mostly consisting of cell colonies of limited complexity.
580–500 million years ago	Most modern phyla of animals begin to appear in the fossil record during the Cambrian explosion.
535 million years ago	Major diversification of living things in the oceans: chordates, arthropods (e.g., trilobites, crustaceans), echinoderms, mollusks, brachiopods, foraminifers, radiolarians, etc.
485 million years ago	First vertebrates with true bones (jawless fishes) evolve.
434 million years ago	First primitive plants arise on land.
225 million years ago	Earliest dinosaurs (prosauropods) and teleost fishes appear.
220 million years ago	Gymnosperm forests dominate the land; herbivores grow to huge sizes.
215 million years ago	First mammals evolve.
65.5 million years ago	The Cretaceous-Tertiary extinction event eradicates about half of all animal species, including all of the dinosaurs.
6.5 million years ago	First hominids evolve.
2 million years ago	First members of the genus <i>Homo</i> appear in the fossil record.
350 thousand years ago	Neanderthals appear.
200 thousand years ago	Anatomically modern humans appear in Africa.
30 thousand years ago	Extinction of Neanderthals.



**FIGURE 1-2** Charles Darwin (1809–1882). Four years after his epic voyage on HMS *Beagle*, Darwin had already begun formulating in private notebooks his concept of natural selection, which would be published in his *Origin of Species* (1859). [Charles Darwin on the Galapagos Islands by Howat, Andrew (20th century)/Private Collection/© Look and Learn/Bridgeman Images.]



**FIGURE 1-3 Cells come in an astounding assortment of shapes and sizes.** Some of the morphological variety of cells is illustrated in these photographs. In addition to morphology, cells differ in their ability to move, internal organization (prokaryotic versus eukaryotic cells), and metabolic activities. (a) Eubacteria: *Lactococcus lactis*, which are used to produce cheese such as Roquefort, Brie, and Camembert. Note the dividing cells. (b) A mass of archaeans (*Methanosarcina*) that produce their energy by converting carbon dioxide and hydrogen gas to methane. Some species that live in the rumens of cattle give rise to >150 liters of methane gas each day. (c) Human blood cells, shown in false color. The red cells are oxygen-bearing erythrocytes, the white cells (leukocytes) are part of the immune system and fight infection, and the green cells are platelets that plug wounds and contain substances to initiate blood clotting. (d) A colonial single-celled green alga,

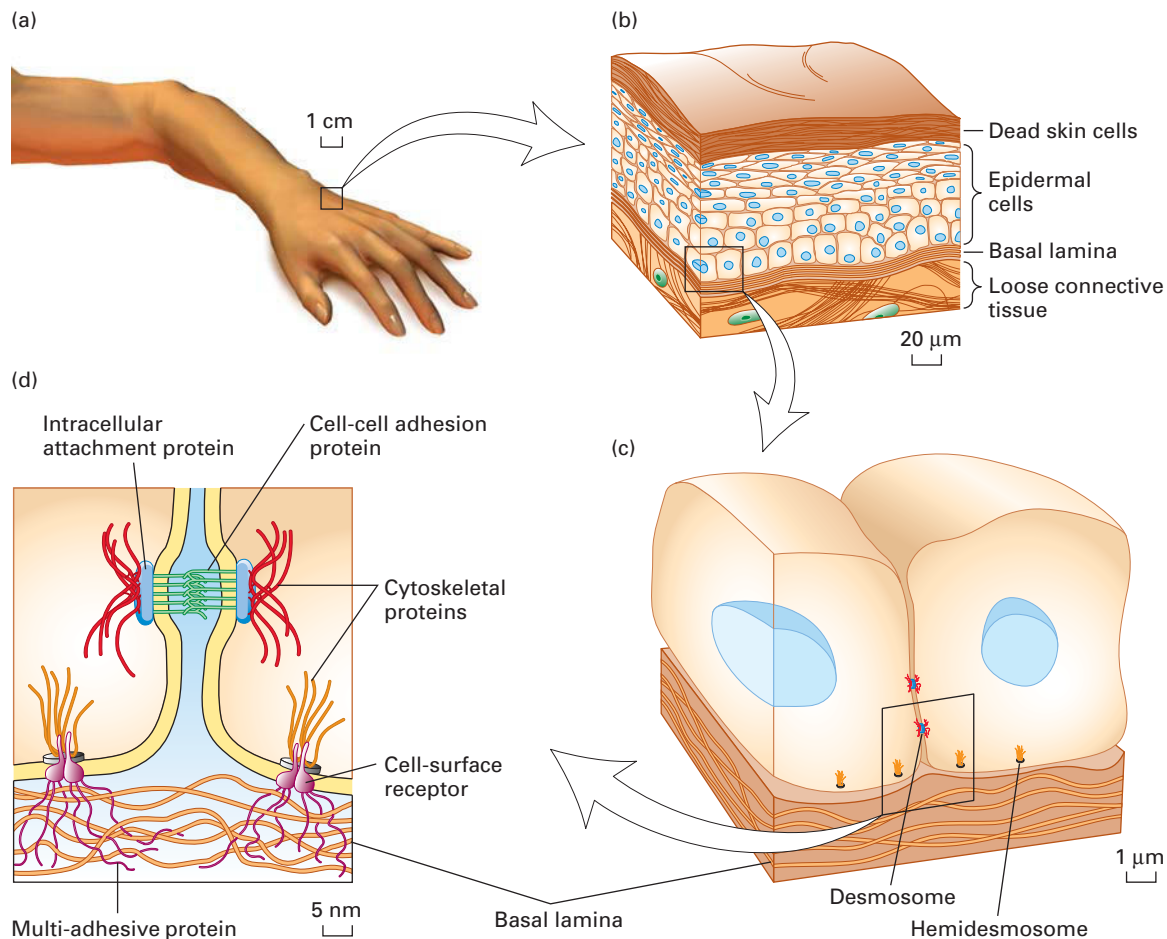
*Volvox aureus*. The large spheres are made up of many individual cells, visible as blue or green dots. The yellow masses inside are daughter colonies, each made up of many cells. (e) A single Purkinje neuron of the cerebellum, which can form more than a hundred thousand connections with other cells through its branched network of dendrites. The cell was made visible by introduction of a green fluorescent protein; the cell body is the bulb at the upper right. (f) Plant cells are fixed firmly in place in vascular plants, supported by a rigid cellulose skeleton. Spaces between the cells are joined into tubes for transport of water and food. [Part (a) Gary Gaugler/Science Source. Part (b) Power and Syred/Science Source. Part (c) Science Source. Part (d) micro\_photo/iStockphoto/Getty Images. Part (e) Courtesy of Dr. Helen M. Blau (Stanford University School of Medicine) and Dr. Clas B. Johansson (Karolinska Institutet). Part (f) Biophoto Associates/Science Source.]

To learn about biological systems, however, we must examine one small portion of a living system at a time. The biology of cells is a logical starting point because an organism can be viewed as consisting of interacting cells, which are the closest thing to autonomous biological units that exist. The last common ancestor of all life on Earth was a single cell (see Figure 1-1), and at the cellular level all life is remarkably similar. All cells use the same molecular building blocks, similar methods for the storage, maintenance, and expression of genetic information, and similar processes of energy metabolism, molecular transport, signaling, development, and structure.

In this chapter, we introduce the common features of cells. We begin with a brief discussion of the principal small

molecules and macromolecules found in biological systems. Next we discuss the fundamental aspects of cell structure and function that are conserved in present-day organisms, focusing first on prokaryotic organisms—single-celled organisms without a nucleus—and their uses in studying the basic molecules of life. Then we discuss the structure and function of eukaryotic cells—cells with a defined nucleus—focusing on their many organelles. This discussion is followed by a section describing the use of unicellular eukaryotic organisms in investigations of molecular cell biology, focusing on yeasts and the parasite that causes malaria.

We now have the complete sequences of the genomes of several thousand **metazoans** (multicellular animals), and these sequences have provided considerable insight into the



**FIGURE 1-4 Living systems such as the human body consist of closely interrelated elements.** (a) The surface of the hand is covered by a living organ, skin, that is composed of several layers of tissue. (b) An outer covering of hard, dead skin cells protects the body from injury, infection, and dehydration. This layer is constantly renewed by living epidermal cells, which also give rise to hair and fur in animals. Deeper layers of muscle and connective tissue give skin its tone and firmness. (c) Tissues are formed through subcellular adhesion

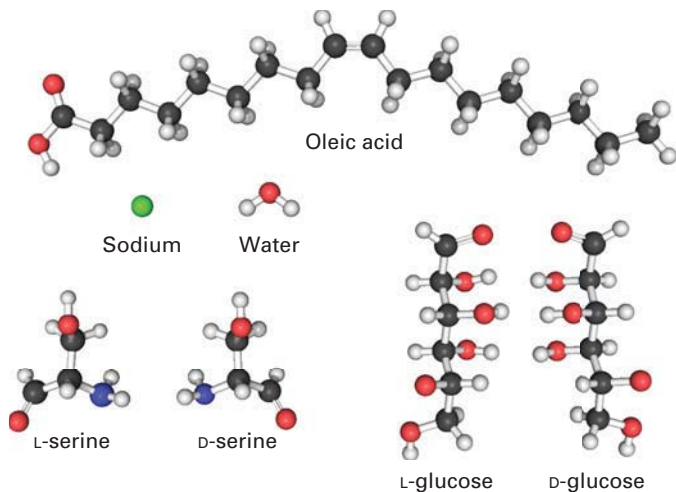
structures (desmosomes and hemidesmosomes) that join cells to one another and to an underlying layer of supporting fibers. (d) At the heart of cell-cell adhesion are its structural components: phospholipid molecules that make up the cell-surface membrane, and large protein molecules. Protein molecules that traverse the cell membrane often form strong bonds with internal and external fibers made of multiple proteins.

evolution of genes and organisms. The final section in this chapter shows us how this information can be used to refine the evolutionary relationships among organisms as well as our understanding of human development. Indeed, biologists use evolution as a research tool: if a gene and its protein have been conserved in all metazoans but are not found in unicellular organisms, the protein probably has an important function in all metazoans and thus can be studied in whatever metazoan organism is most suitable for the investigation. Because the structure and function of many types of metazoan cells is also conserved, we now understand the structure and function of many cell types in considerable detail, including muscle and liver cells and the sheets of epithelial cells that line the intestine and form our skin. But other cells—especially the multiple types that form our nervous and immune systems—still remain mysterious; much important cell biological experimentation is needed on these and other cell systems and organs that form our bodies.

## 1.1 The Molecules of Life

While large polymers are the focus of molecular cell biology, small molecules are the stage on which all cellular processes are set. Water, inorganic ions, and a wide array of relatively small organic molecules (Figure 1-5) account for 75 to 80 percent of living matter by weight, and water accounts for about 75 percent of a cell's volume. These small molecules, including water, serve as substrates for many of the reactions that take place inside the cell, including energy metabolism and cell signaling. Cells acquire these small molecules in different ways. Ions, water, and many small organic molecules are imported into the cell (see Chapter 11); other small molecules are synthesized within the cell, often by a series of chemical reactions (see Chapter 12).

Even in the structures of many small molecules, such as sugars, vitamins, and amino acids, we see the footprint of evolution. For example, all amino acids save glycine have an



**FIGURE 1-5** Some of the many small molecules found in cells. Only the L-forms of amino acids such as serine are incorporated into proteins, not their D-mirror images; only the D-form of glucose, not its L-mirror image, can be metabolized to carbon dioxide and water.

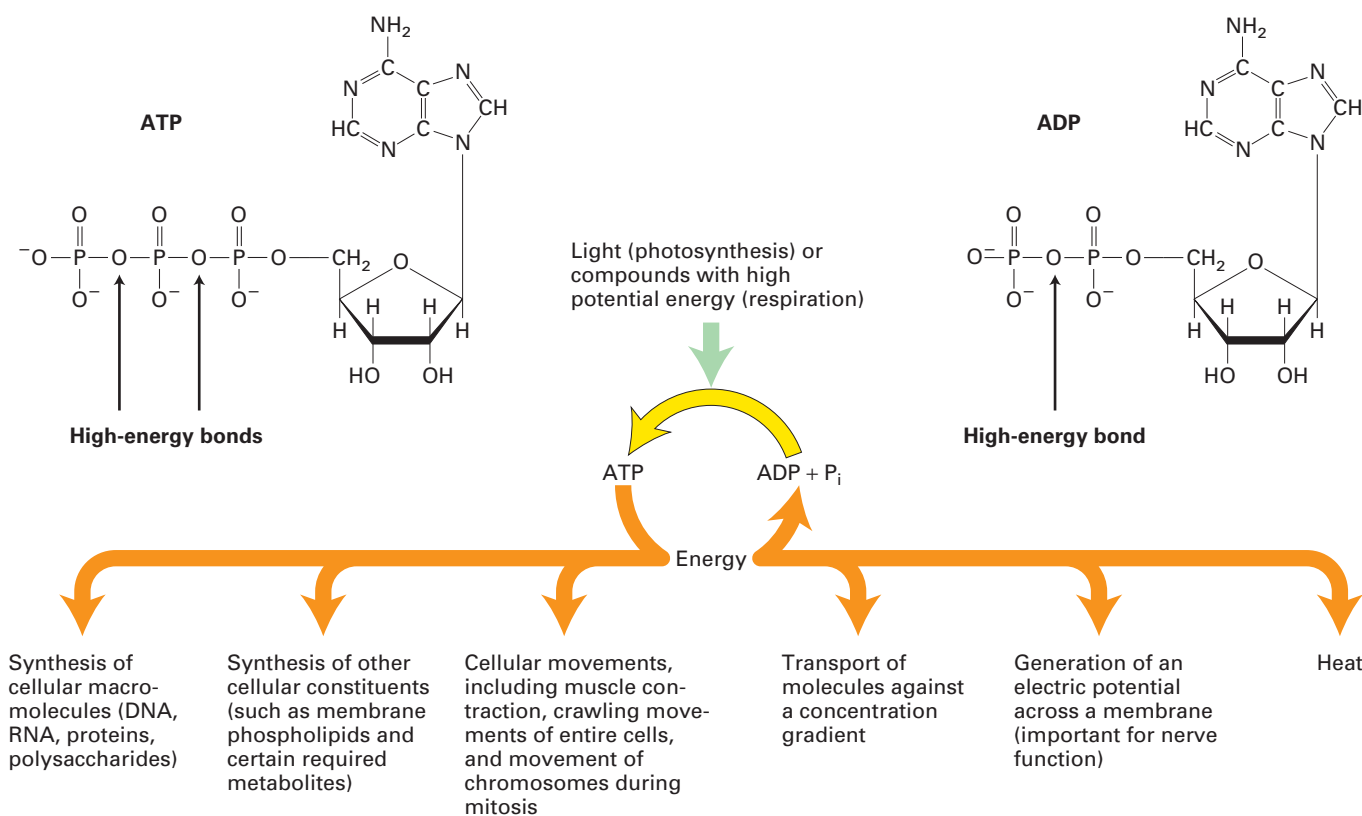
asymmetric carbon atom, yet only the L-stereoisomer, never the D-stereoisomer, is incorporated into proteins. Similarly, only the D-stereoisomer of glucose is invariably found in cells, never the mirror-image L-stereoisomer (see Figure 1-5). At an early stage of biological evolution, our common cellular ancestor evolved the ability to catalyze reactions with one

stereoisomer instead of the other. How these selections happened is unknown, but now these choices are locked in place.

An important and universally conserved small molecule is **adenosine triphosphate (ATP)**, which stores readily available chemical energy in two of its chemical bonds (Figure 1-6). When one of these energy-rich bonds in ATP is broken, forming **ADP (adenosine diphosphate)**, the released energy can be harnessed to power energy-requiring processes such as muscle contraction or protein biosynthesis. To obtain energy for making ATP, all cells break down food molecules. For instance, when sugar is degraded to carbon dioxide and water, the energy stored in the sugar molecule's chemical bonds is released, and much of it can be "captured" in the energy-rich bonds in ATP. Bacterial, plant, and animal cells can all make ATP by this process. In addition, plants and a few other organisms can harvest energy from sunlight to form ATP in **photosynthesis**.

Other small molecules (e.g., certain hormones and growth factors) act as signals that direct the activities of cells (see Chapters 15 and 16), and neurons (nerve cells) communicate with one another by releasing and sensing certain small signaling molecules (see Chapter 22). The powerful physiological effects of a frightening event, for example, come from the instantaneous flooding of the body with the small-molecule hormone adrenaline, which mobilizes the "fight or flight" response.

Certain small molecules (**monomers**) can be joined to form **polymers** (also called **macromolecules**) through



**FIGURE 1-6** Adenosine triphosphate (ATP) is the most common molecule used by cells to capture, store, and transfer energy. ATP is formed from adenosine diphosphate (ADP) and inorganic phosphate

( $P_i$ ) by photosynthesis in plants and by the breakdown of sugars and fats in most cells. The energy released by the splitting (hydrolysis) of  $P_i$  from ATP drives many cellular processes.



repetition of a single type of covalent chemical-linkage reaction. Cells produce three types of large macromolecules: polysaccharides, proteins, and nucleic acids. Sugars, for example, are the monomers used to form polysaccharides. Different polymers of D-glucose form cellulose, an important component of plant cell walls, and glycogen, a storage form of glucose found in liver and muscle. The cell is careful to provide the appropriate mix of small molecules needed as precursors for synthesis of macromolecules.

### Proteins Give Cells Structure and Perform Most Cellular Tasks

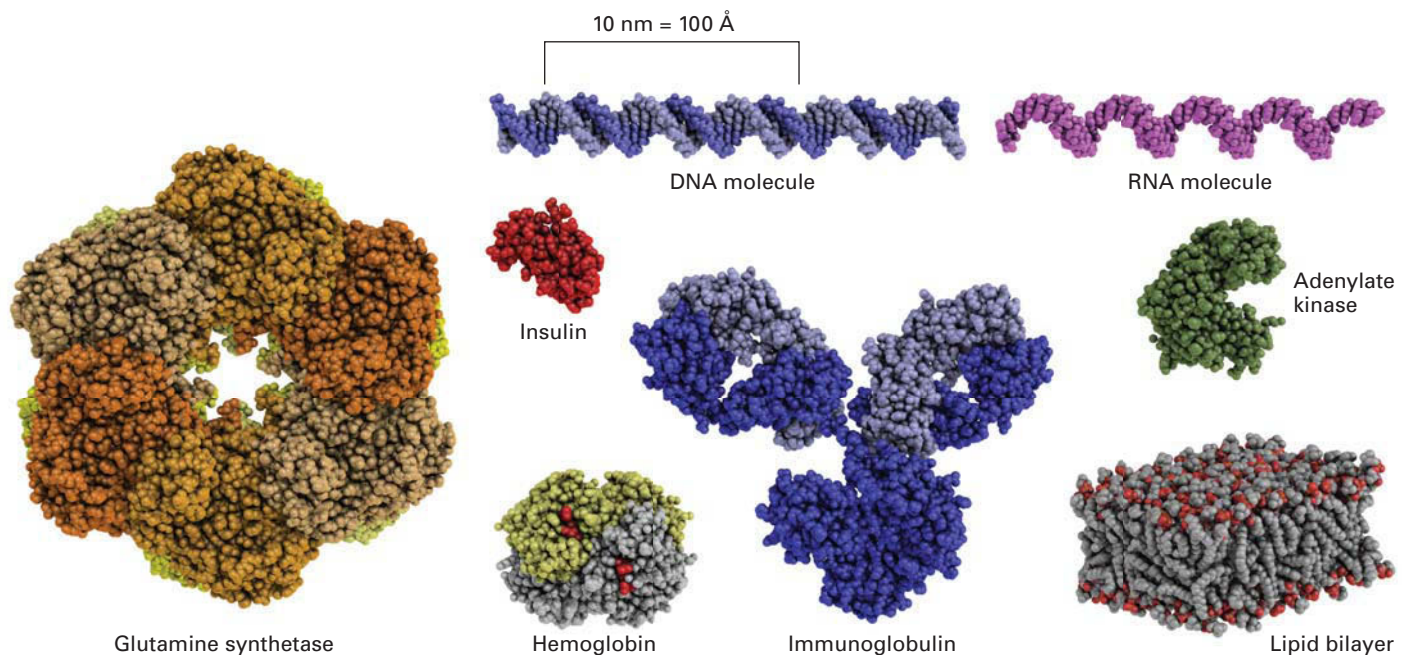
Proteins, the workhorses of the cell, are the most abundant and functionally versatile of the cellular macromolecules. Cells string together 20 different **amino acids** in linear chains, each with a defined sequence, to form proteins (see Figure 2-14), which commonly range in length from 100 to 1000 amino acids. During or just after its polymerization, a linear chain of amino acids folds into a complex shape, conferring a distinctive three-dimensional structure and function on the protein (Figure 1-7). Humans obtain amino acids either by synthesizing them from other molecules or by breaking down proteins that we eat.

Proteins have a variety of functions in the cell. Many proteins are **enzymes**, which accelerate (catalyze) chemical reactions involving small molecules or macromolecules (see Chapter 3). Certain proteins catalyze steps in the synthesis of all proteins; others catalyze synthesis of macromolecules such

as DNA and RNA. **Cytoskeletal proteins** serve as structural components of a cell; for example, by forming an internal skeleton. Other proteins associated with the cytoskeleton power the movement of subcellular structures such as chromosomes, and even of whole cells, by using energy stored in the chemical bonds of ATP (see Chapters 17 and 18). Still other proteins bind adjacent cells together or form parts of the extracellular matrix (see Figure 1-4). Proteins can be sensors that change shape as temperature, ion concentrations, or other properties of the cell change. Many proteins that are embedded in the cell-surface (plasma) membrane import and export a variety of small molecules and ions (see Chapter 11). Some proteins, such as insulin, are hormones; others are hormone receptors that bind their target protein or small molecule and then generate a signal that regulates a specific aspect of cell function. Other important classes of proteins bind to specific segments of DNA, turning genes on or off (see Chapter 9). In fact, much of molecular cell biology consists of studying the function of specific proteins in specific cell types.

### Nucleic Acids Carry Coded Information for Making Proteins at the Right Time and Place

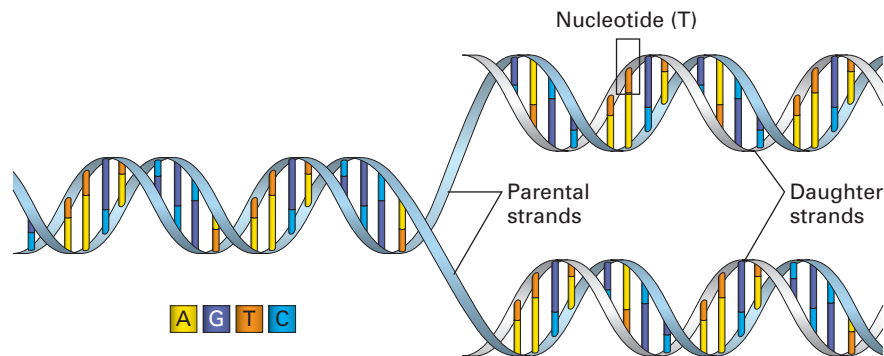
The macromolecule that garners the most public attention is deoxyribonucleic acid (DNA), whose functional properties make it the cell's "master molecule." The three-dimensional structure of DNA, first proposed by James D. Watson and Francis H. C. Crick in 1953, consists of two long helical strands that are coiled around a common axis to form a



**FIGURE 1-7 Models of some representative proteins drawn to a common scale and compared with a small portion of a lipid bilayer, a DNA molecule, and an RNA molecule.** Each protein has a defined three-dimensional shape held together by numerous chemical bonds. The illustrated proteins include enzymes (glutamine synthetase and adenylate kinase), an antibody (immunoglobulin), a hormone (insulin), and the blood's oxygen carrier (hemoglobin). [Glutamine synthetase

data from H. S. Gill and D. Eisenberg, 2001, *Biochemistry* **40**:1903–1912, PDB ID 1fpy. Insulin data from E. N. Baker et al., 1988, *Phil. Trans. R. Soc. Lond. B Biol. Sci.* **319**:369–456, PDB ID 4ins. Hemoglobin data from G. Fermi et al., 1984, *J. Mol. Biol.* **175**:159–174, PDB ID 2hhb. Immunoglobulin data from L. J. Harris et al., 1998, *J. Mol. Biol.* **275**:861–872, PDB ID 1igy. Adenylate kinase data from G. Bunkoczi et al., PDB ID 2c9y.]

**FIGURE 1-8 DNA consists of two complementary strands wound around each other to form a double helix.** The double helix is stabilized by weak hydrogen bonds between the A and T bases and between the C and G bases. During replication, the two strands are unwound and used as templates to produce complementary strands. The outcome is two identical copies of the original double helix, each containing one of the original strands and one new daughter (complementary) strand.



**double helix** (Figure 1-8). The double-helical structure of DNA, one of nature's most magnificent constructions, is critical to the phenomenon of **heredity**, the transfer of genetically determined characteristics from one generation to the next.

DNA strands are composed of monomers called **nucleotides**; these monomers are often referred to as *bases* because they contain cyclic organic bases (see Chapter 5). Four different nucleotides, abbreviated A, T, C, and G, are joined to form a DNA strand, with the base parts projecting inward from the backbone of the strand. Two strands bind together via the bases and twist to form a double helix. Each DNA double helix has a simple construction: wherever one strand has an A, the other strand has a T, and each C is matched with a G (see Figure 1-8). This **complementary** matching of the two strands is so strong that if complementary strands are separated under the right salt concentration and temperature conditions, they will spontaneously zip back together. This property is critical for DNA replication and inheritance, as we will learn in Chapter 5, and also underlies many of the techniques for studying DNA molecules that are detailed in Chapter 6.

The genetic information carried by DNA resides in its **sequence**, the linear order of nucleotides along a strand. Specific segments of DNA, termed **genes**, carry instructions for making specific proteins. Commonly, genes contain two parts: the coding region specifies the amino acid sequence of a protein; the regulatory region binds specific proteins and controls when and in which cells the gene's protein is made.

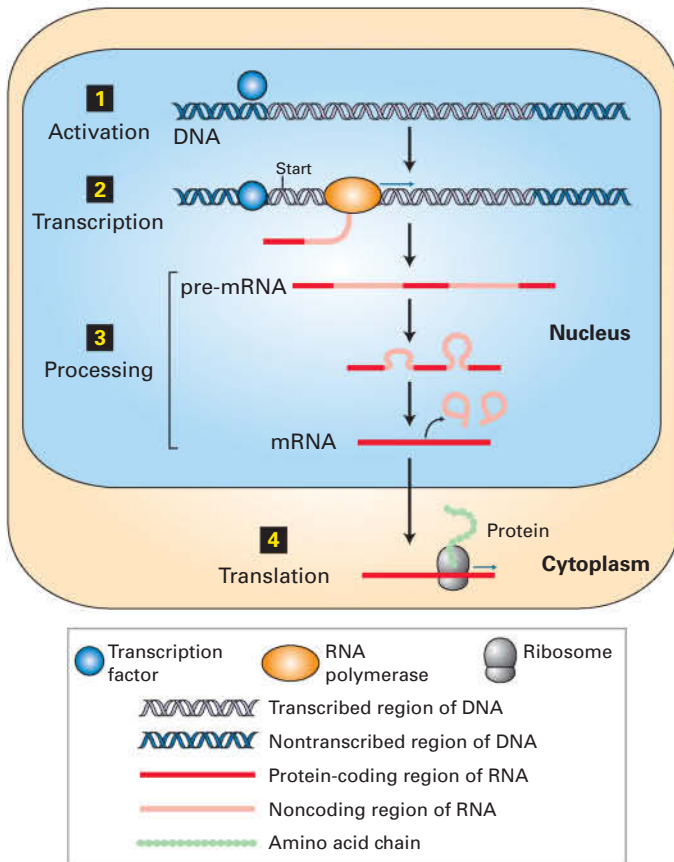
Most bacteria have a few thousand protein-coding genes; yeasts and other unicellular eukaryotes have about 5000. Humans and other metazoans have between 13,000 and 23,000, while many plants have more. As we discuss later in this chapter, many of the genes in bacteria specify the sequences of proteins that catalyze reactions that occur universally, such as the metabolism of glucose and the synthesis of nucleic acids and proteins. These genes, and the proteins encoded by them, are conserved throughout all living organisms, and thus studies on the functions of these genes and proteins in bacterial cells have yielded profound insights into these basic life processes. Similarly, many genes in unicellular eukaryotes such as yeasts encode proteins that are conserved throughout all eukaryotes; we will see how yeasts have been used in studies of processes such as cell division that have yielded profound insights into human diseases such as cancer.

How is information stored in the sequence of DNA used? Cells use two processes in series to convert the coded information in DNA into proteins (Figure 1-9). In the first process, called **transcription**, the protein-coding region of a gene is copied into a single-stranded **ribonucleic acid (RNA)** whose sequence is the same as one of the two in the double-stranded DNA. A large enzyme, **RNA polymerase**, catalyzes the linkage of nucleotides into an RNA chain using DNA as a template. In eukaryotic cells, the initial RNA product is processed into a smaller **messenger RNA (mRNA)** molecule, which moves out of the nucleus to the **cytoplasm**, the region of the cell outside of the nucleus. Here the **ribosome**, an enormously complex molecular machine composed of both RNA and proteins, carries out the second process, called **translation**. During translation, the ribosome assembles and links together amino acids in the precise order dictated by the mRNA sequence according to the nearly universal **genetic code**. We examine the cell components that carry out transcription and translation in detail in Chapter 5.

In addition to its role in transferring information from nucleus to cytoplasm, RNA can serve as a framework for building a molecular machine. The ribosome, for example, is built of four RNA chains that bind to more than 50 proteins to make a remarkably precise and efficient mRNA reader and protein synthesizer. While most chemical reactions in cells are catalyzed by proteins, a few, such as the formation by ribosomes of the peptide bonds that connect amino acids in proteins, are catalyzed by RNA molecules.

Well before the entire human genome was sequenced, it was apparent that only about 10 percent of human DNA consists of protein-coding genes, and for many years the remaining 90 percent was considered "junk DNA"! In recent years, we've learned that much of the so-called junk DNA is actually copied into thousands of RNA molecules that, though they do not encode proteins, serve equally important purposes in the cell (see Chapter 10). At present, however, we know the function of only a very few of these abundant noncoding RNAs.

Like enzymes, certain RNA molecules, termed **ribozymes**, catalyze chemical reactions, as exemplified by the RNA inside a ribosome. Many scientists support the *RNA world* hypothesis, which proposes that RNA molecules that could replicate themselves were the precursors of current life forms;



**FIGURE 1-9** The information encoded in DNA is converted into the amino acid sequences of proteins by a multistep process. Step **1**: Transcription factors and other proteins bind to the regulatory regions of the specific genes they control to activate those genes. Step **2**: RNA polymerase begins transcription of an activated gene at a specific location, the start site. The polymerase moves along the DNA, linking nucleotides into a single-stranded pre-mRNA transcript using one of the DNA strands as a template. Step **3**: The transcript is processed to remove noncoding sequences. Step **4**: In a eukaryotic cell, the mature mRNA moves to the cytoplasm, where it is bound by ribosomes that read its sequence and assemble a protein by chemically linking amino acids into a linear chain.

billions of years ago, the RNA world gradually evolved into the DNA, RNA, and protein world of today's organisms.

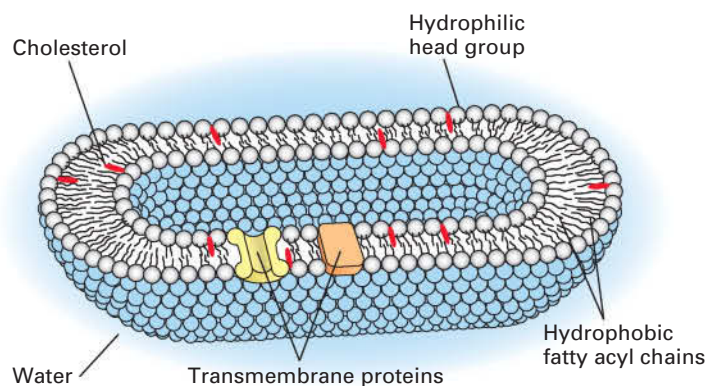
All organisms must control when and where their genes are transcribed. Nearly all the cells in our bodies contain the full set of human genes, but in each cell type only some of these genes are active, or turned on, and used to make proteins. For instance, liver cells produce some proteins that are not produced by kidney cells, and vice versa. Moreover, many cells respond to external signals or changes in external conditions by turning specific genes on or off, thereby adapting their repertoire of proteins to meet current needs. Such control of gene activity depends on DNA-binding proteins called **transcription factors**, which bind to specific sequences of DNA and act as switches, either activating or repressing transcription of particular genes, as discussed in Chapter 9.

## Phospholipids Are the Conserved Building Blocks of All Cellular Membranes

In all organisms, cellular membranes are composed primarily of a bilayer (two layers) of phospholipid molecules. Each of these bipartite molecules has a “water-loving” (hydrophilic) “head” and a “water-hating” (hydrophobic) “tail.” The two phospholipid layers of a membrane are oriented with all the hydrophilic heads directed toward the inner or outer surfaces of the membrane and the hydrophobic tails buried within its interior (Figure 1-10). Smaller amounts of other lipids, such as cholesterol, are inserted into this phospholipid framework. Cellular membranes are extremely thin relative to the size of a cell. If you magnify a bacterium or yeast cell about 10,000 times to the size of a soccer ball, the plasma membrane is about as thick as a sheet of paper!

Phospholipid membranes are impermeable to water, all ions, and virtually all hydrophilic small molecules. Thus each membrane in each cell also contains groups of proteins that allow specific ions and small molecules to cross. Other membrane proteins serve to attach the cell to other cells or to polymers that surround it; still others give the cell its shape or allow its shape to change. We will learn more about membranes and how molecules cross them in Chapters 7 and 11.

New cells are always derived from parental cells by cell division. We've seen that the synthesis of new DNA molecules is templated by the two strands of the parental DNA such that each daughter DNA molecule has the same sequence as the parental one. In parallel, new membranes are made by incorporation of lipids and proteins into existing membranes in the parental cell and divided between daughter cells by fission. Thus membrane synthesis, like DNA synthesis, is templated by a parental structure.



**FIGURE 1-10** The watery interior of cells is surrounded by the plasma membrane, a two-layered shell of phospholipids. The phospholipid molecules are oriented with their hydrophobic fatty acyl chains (black squiggly lines) facing inward and their hydrophilic head groups (white spheres) facing outward. Thus both sides of the membrane are lined by head groups, mainly charged phosphates, adjacent to the watery spaces inside and outside the cell. All biological membranes have the same basic phospholipid bilayer structure. Cholesterol (red) and various proteins are embedded in the bilayer. The interior space is actually much larger relative to the volume of the plasma membrane than is depicted here.